

CERTIFIED

wagyu

BREEDERS AUCTION



WAGYU GUIDE

AUCTION CATALOGUE 2017



WILDSWINKEL
maklik eerlik direk

Saturday 21 October 2017
Atterbury Theatre, Lynnwood Bridge,
4 Daventry Street, Lynnwood Manor, Pretoria

NO RESERVE AUCTION



CERTIFIEDWAGYU.CO.ZA



Woodview Wagyu 3rd Production Sale

Donderdag 14 April 2018 om 11vm
te Woodview, Arlington



*South Africa's
Foundation Herd*

**Information Day &
Cocktail Party
13 April 2018**

**Brian Angus - 082 573 9687
Office - 071 657 9068
www.woodview.co.za**

*Landbouweekblad & Breedplan
Stoet Teler van die Jaar*

WELCOME



**WELCOME TO THE FIRST, OUR
INAUGURAL, WAGYU AUCTION.**

Certified Wagyu Breeders is a grouping of Wagyu breeders that has a passion for prime. Our stock consists of Full-blood and Crossbred Japanese Black and Akaushi cattle. We currently operate within the borders of the Republic of South Africa and our goals are to provide our customers with the very best Wagyu genetics and in future the highest quality Wagyu beef products and exceptional customer service. We treat every customer as a partner because we believe long term success is the result of partnerships where we all win.

Honesty, justice and courtesy from a moral philosophy which, associated with mutual interest among people, should be the principles on which ethics are founded.

Accordingly the breeders will have full regard for achieving excellence in the practice of the profession and the importance of maintaining the highest standards of ethical conduct in responsibilities and work for all clients, colleagues and associates, as well as society at large.

Hence, our strong support of the Wagyu breed and active membership of the South African Wagyu Breeders Association as well as the Australian Wagyu Association.

If you are interested in our products or just want to find out more information about our operation or Wagyu cattle in general, please browse our web site (certifiedwagyu.co.za). We are seeing a lot of new interest in Wagyu cattle and believe that the best is yet to come!

Come on and join in with us and let's grow this breed and improve the quality of beef across the world and specifically in Africa.

**Samuel Pauw
Project Manager: Certified Wagyu Breeders Auction**

CONTENTS

4	THE HAMBLIN FAMILY
7	STOP RHINO POACHING
9	ADAPT OR DIE, DELTA WAGYU INTERNATIONAL
11	THE HISTORY OF KOBE BEEF IN JAPAN
15	WAGYU OUTSIDE OF JAPAN
19	THE DIFFERENCE BETWEEN KOBE AND WAGYU BEEF
23	WAGYU BREEDPLAN EBVS AND INDEXES
26	WAGYU X ANGUS CROSSBREEDING ADVANTAGE
27	INDEX NAME CHANGE FROM FTI TO TCI
28	WAGYU CARCASSES
29	PUREBRED VS FULLBLOOD WAGYU
30	VENDORS LIST
	CERTIFIED WAGYU BREEDERS
30	AL 5 WAGYU
31	DELTA WAGYU SOUTH AFRICA
32	KOBE STUD BREEDING
33	WINTERBERG WAGYU
34	WOODVIEW
35	XARIEP FARMING
36	AUCTION CATALOGUE
38	WILDSWINKEL ONLINE REGISTRATIONS AND TIMED AUCTIONS
40	AUCTION LOTS
66	CERTIFIED WAGYU BREEDERS AND GUEST SELLERS
67	TIMED/ONLINE AUCTION CATALOGUE
68	WILDSWINKEL TIMED AUCTIONS: HOW TO
70	TIMED AUCTION LOTS
74	RULES OF AUCTION
75	SPECIAL RULES OF AUCTION

THE HAMBLIN FAMILY

STRATHDALE, QUEENSLAND



THE HAMBLIN FAMILY RUN THEIR 6,000 WAGYU OVER 46,000 ACRES IN CENTRAL QUEENSLAND AND THE DARLING DOWNS.

They began breeding Wagyu in 2000 by artificially inseminating their Brahman and Brangus cows. They have since purchased higher-content Wagyu crossbred cows to boost breeder numbers.

The Hamblins' Wagyu enterprise trades under the Strathdale Wagyu and Masterbeef brands. The Hamblins breed fullblood, poll purebred and crossbred Wagyu cattle. Their herd is raised on buffel grass pastures in central Queensland. They are lot fed in southern Queensland and marketed as carcass sales in New South Wales.

The Hamblins used shorthorn as a base breed in order to source the large number of cows needed for a sizeable land addition in 2010. Their offspring have been the nucleus for their progeny test selection process for high-performance sires.

The enterprise has largely used artificial insemination, but in 2014 the Hamblins also focused on IVF to increase their herd's volume of high-performing genetics from superior



sires and dams. Their main practice has since been MOET flush programs: their Wagyu crossbreds receive 1,000 embryos a year.

Masterbeef won gold medals in the Australian Wagyu Association's Branded Beef Competition in 2014, 2015 and 2016. It also won five out of six categories with an F1 animal in the 2010 Pacific Carcass Competition.



Elite AKAUSHI GENETICS

MYERS -COOPER GENETICS



QUEEN S2409R



0013W



V7203U



V7409U



7695W



7B608



7877W



7767W



7863W



7B558






9174X

**MYERS
-COOPER
GENETICS**
San Angelo, TX

DOMESTIC & INTERNATIONAL EMBRYOS AVAILABLE!

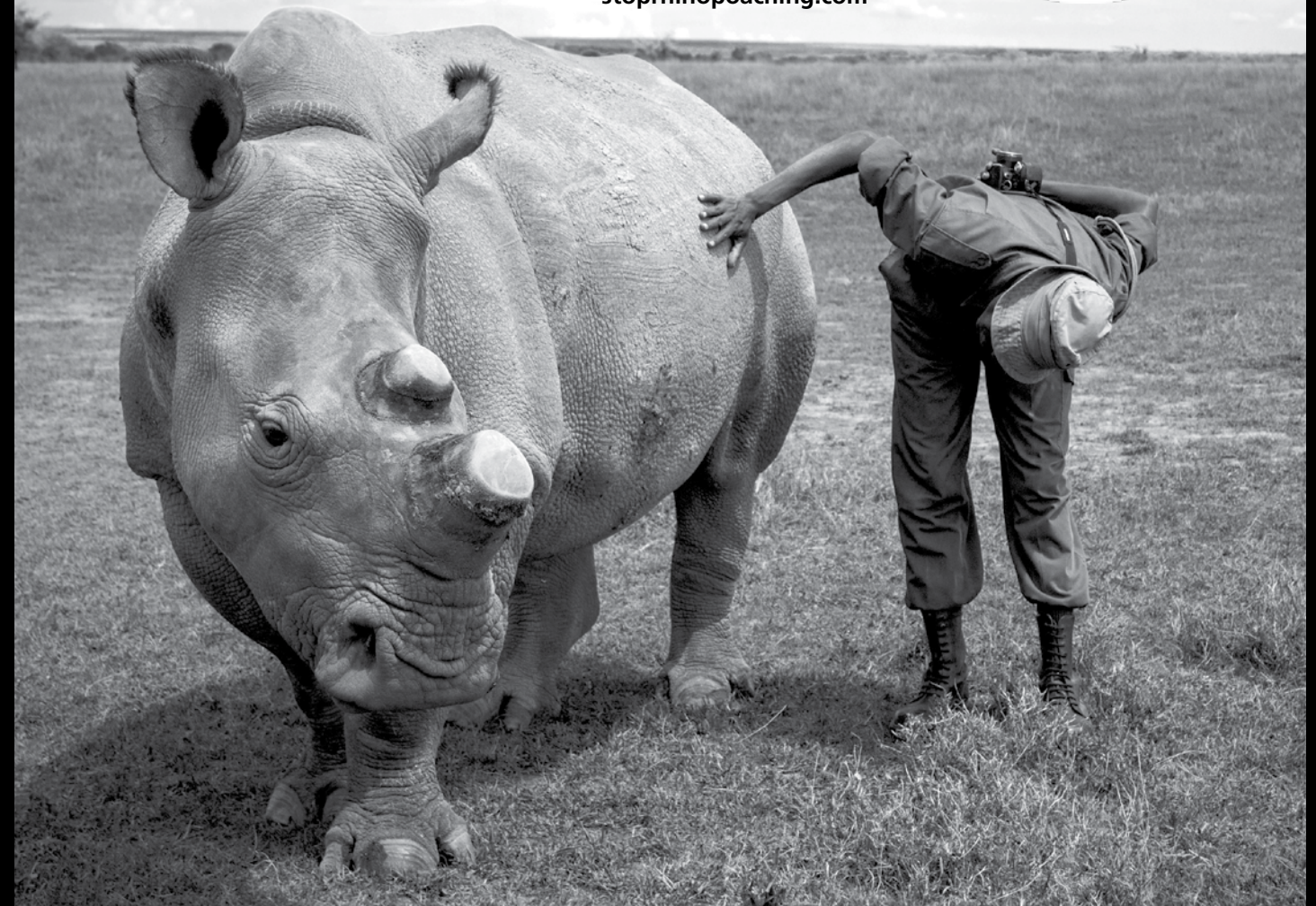
Available to Australia, South Africa, EU, South America and many others

www.akaushiinsight.com   

Aaron Cooper, Ph.D. • 33 VENTURES • +1(402) 310-1327 • coopaaron@gmail.com

STOP RHINO POACHING

stoprhinopoaching.com



S topRhinoPoaching.com WAS ESTABLISHED IN 2010 IN RESPONSE TO THE ESCALATING RHINO CRISIS IN SOUTH AFRICA.

The organisation is actively involved in the fight against rhino poaching and has a national footprint for the strategic funding of security initiatives and ranger support. StopRhinoPoaching.com encourages collaborative projects with individuals and corporates, channeling their funding and support into tangible projects within selected key rhino areas and reserves.

StopRhinoPoaching.com is dedicated and committed to practising good corporate governance. Over the years the organisation has cultivated excellent trust relationships, a valued work ethic and a respected culture. It has an in-depth understanding of the evolving poaching threat gained by staying well-informed about stakeholders' current requirements. StopRhinoPoaching.com has proven to be an integrating force between selected security stakeholders; government, public and private.

Focus areas include encouraging strategic relationships between roleplayers, supporting investigations and security stakeholders, ranger wellness, funding of specialised training and equipment and a highly successful Rhino Dogs Project. StopRhinoPoaching.com has the ability to scale projects according to available funding through strategic partnerships, working collaboratively to help reserves to safeguard the lives of rangers and rhino alike.



DELTA WAGYU SOUTH AFRICA

RED AKAUSHI  POLLED  ULTRA MARBLING

Over 200 Embryo's available on the online shop by

- Itoshigenami (TCI +351)
- Peppermill Grove L13, (TCI +\$386)
- Sher Zurushige B119 (TCI +\$384)
- Sumo Michifuku SMOFF0126 (TCI +\$491)
- Masterchef (Champion of the World Bull 2015)
- Tambo (Champion of the World Bull 2016)
- Focono OWFFK00139 (HP Polled)

For more information please contact:

Johan on (+27) 827 885 378 or joeduplessis@gmail.com

www.deltawagyu.co.za



ADAPT OR DIE

DELTA WAGYU INTERNATIONAL



HE BINNIE FAMILY HAVE BEEN LIVING AND WORKING ON MIRANNIE STATION SINCE 1898.

In the early years, they focused on breeding and raising draught horses for the breweries and bakeries in Sydney, however with the arrival of the motor car, it was obvious that the world was moving on, and demand for horses was going to fall away.



“Compared to all other cattle breeds, the Wagyu Breed impresses for so many reasons”

The Binnie's have always had an agile mindset to business, choosing to adapt to market changes, capturing opportunities, rather than being victim to the inevitable winds of change. With this adapt or die philosophy, and the loss of the draught horse market, they turned their attention to Stud and Commercial Hereford Cattle, which they were in for 98 years until again, they realised that the market had changed, and was now demanding a higher quality item, which is virtually free from the agonising volatility of the commodity cattle market, that swings and lurches from drought to drought. Despite being two years off the centenary, a strong track record of achievement and extensive networks in Herefords, it was decided to move out of Herefords, and into the Wagyu breed in 2015. A decision, that has not been regretted.

“Compared to all other cattle breeds, the Wagyu Breed impresses for so many reasons” he said. “They are highly fertile, have low calving problems, long breeding life, produce healthier beef and command a premium to other breeds due to their superior eating qualities. In addition, they offer the option of producing entire Full blood cattle for seed stock

purposes, or conversion into feeders, which still bring generous premiums over traditional cattle”.

The Delta team have covered the world, looking for and acquiring the best Wagyu Genetics available. Unlike other breeders, we are not hoarders, rather we willingly share our genetics and are now producing 150 bulls a year for the domestic market, and selling over 500 elite embryo's and 50,000+ straws of semen internationally.

“Our efforts are guided by comprehensive progeny testing, and strategic breeding programs to lift production and profitability. We can now tailor our genetics to maximise fertility and weaning rates, decrease calf mortality, as well as enhancing immunity, all which dramatically increase the price per kilo”

Using this knowledge of genetics, Delta now boasts a highly sought after herd that includes the 2015 and 2016 Champion of the World Bulls, Masterchef and Tambo, the silver winning female, one of two available

sons of Mayura Itoshigenami, who holds the world record price per straw of semen, and has a FTI well over 500. In addition, Delta has acquired the only known Red High Tajima Polled Bull and all known Purebred Black Polled outcross lines currently in Australia.

Delta has now ventured up the supply chain through the HHW and HB Calves businesses, that involves the strategic implantation of Wagyu beef semen into dairy cows in the Australian and NZ markets, backgrounding, feed lotting, processing and retailing of premium Wagyu beef.

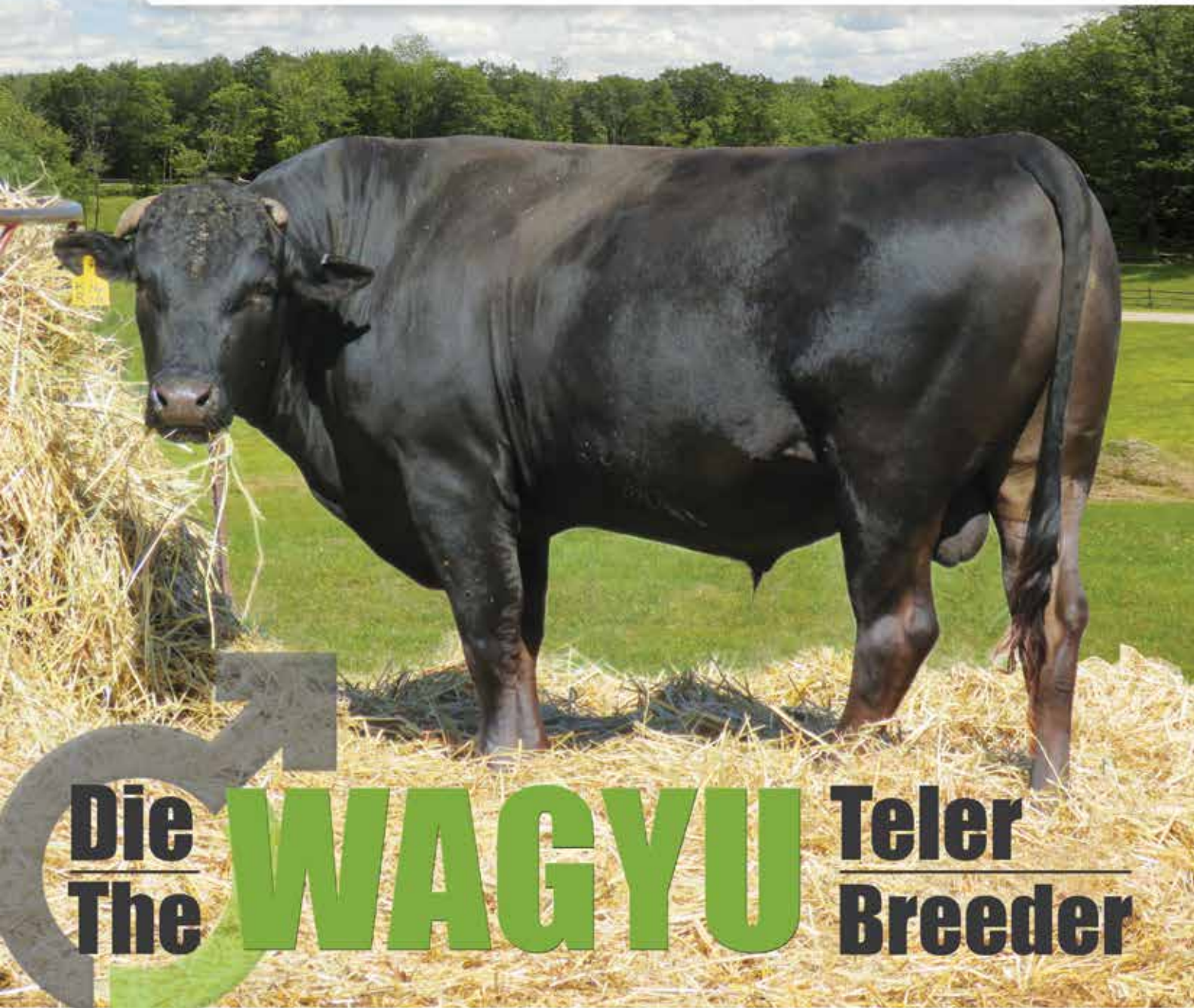
Delta Wagyu International now covers the APAC, African and European markets, which allows us to back up world class genetics, with local service. Delta is focused on forming relationships, sharing the best genetics available and strengthening the international Wagyu community, a key principle to all business dealings.



Embryo's • Semen • Full Bloods

KOBE

STUD BREEDING



Die The **WAGYU** Teler Breeder

Jacques le Roux

jacques@freroux.com
www.kalharoo.com

082 320 2808
048 881 0132



THE HISTORY OF KOBE BEEF IN JAPAN

BY JOHN W. LONGWORTH

From Beef in Japan by Prof. John W. Longworth, University of Queensland Press, 1983. This book is currently out-of-print, and this information is used here with the kind permission of Prof. Longworth.

EATING MEAT FROM FOUR LEGGED ANIMALS WAS PROHIBITED IN JAPAN FOR MORE THAN A THOUSAND YEARS PRIOR TO 1868.

This ban was especially strict during the Edo Period (1603-1867). Buddhist influences were primarily responsible for this dietary restriction, but other cultural factors and the need to protect draught animals in times of famine may have reinforced the taboo. After the Meiji Restoration in 1868, the new leaders of Japan wanted, among other things, to reduce traditional social barriers and to encourage the adoption of beneficial Western habits. There may also have been a desire to weaken the power of the Buddhists. Lifting the ban on the eating of meat was a

small step towards these objectives. Nevertheless, it must have astounded the nobility of the day to see the young Emperor Meiji eating beef.

Despite the formal rescinding of the prohibition against the eating of meat in the late 1860's, the consumption of meat remained extremely low for another century. Until very recent times meat (niku in Japanese) usually meant pork in eastern Japan (roughly from Tokyo to Hokkaido) and beef in western Japan (from Nagoya/Osaka to Kyushu). Historically, and even today, the people of the Kinki Region (Kyoto, Kobe, and Osaka) have been the heaviest beef eaters.

For millennia the people of Japan lived on a diet of rice, vegetables, and seafood eaten with hashi (chopsticks). Although the meat taboo was removed over a hundred years earlier,

by 1980 the average Japanese ate only 5.1 kg of beef (carcass weight basis). In some Western countries, where income levels are comparable with those in Japan, the average person commonly devours ten times this quantity each year. Although the younger generation has grown up with Western cuisine, knife and fork, most Japanese still enjoy beef best when it is prepared as very thin slices, cooked in the traditional manner and eaten with hashi.

From about 1955 onwards, the mechanization of rice cultivation led to an increase in the availability of beef, as large numbers of draught cattle were fattened and slaughtered. At the same time the rapid economic growth, which started with the Korean War boom, was gaining momentum. People could afford the luxury of meat more often.

THE ORIGINS OF KOBE BEEF

The creation of genuine Kobe (or Matsuzaka or Omi) beef is a mystical folk art which may have been practiced as an underground cult before 1868. Some sources claim that certain daimyo and even some shoguns enjoyed especially fattened beef from Hihone hab (now Shiga Prefecture, the home of Omibeef). Most Japanese believe, however, that

the art of producing Omi, Matusaka, or Kobe beef cannot be traced back to feudal times.

Kobe beef traditionally comes from Wagyu cattle. “Wa” is a very old Japanese language term for Japan, or things Japanese, and one of the meanings of “gyu” is beef, with an “on the hoof” connotation. There are four commercial breeds of Wagyu:

Name of modern breed	Region and prefecture in which the breed developed	European breeds crossed with native cattle	% of national beef breed herd (1981)
Japanese Black	Kinki – Kyoto	Brown Swiss	87%
	Kinki – Hyogo	Shorthorn, Devon, Brown Swiss	
	Chugoku – Okayama	Shorthorn, Devon	
	Chugoku – Hiroshima	Simmental, Brown Swiss, Shorthorn, Ayrshire	
	Chugoku – Tottori	Brown Swiss, Shorthorn	
	Chugoku – Shimene	Devon, Brown Swiss, Simmental, Ayrshire	
	Chugoku – Yamaguchi	Devon, Ayrshire, Brown Swiss	
	Shikoku – Ehime	Shorthorn	
	Kyushu – Oita	Brown Swiss, Simmental	
Japanese Brown	Shikoku – Kochi	Simmental, Korean Cattle	9%
	Kyushu – Kumamoto	Simmental, Korean Cattle, Devon	
Japanese Poll	Chugoku – Yamaguchi	Aberdeen Angus	< 2,000 breeding females
Japanese Shorthorn	Tohoku – Aomori	Shorthorn, Dairy Shorthorn	
	Tohoku – Iwate	Shorthorn, Dairy Shorthorn	
	Tohoku – Akita	Shorthorn, Devon, Ayrshire	

Source: Derived from Kiyoshi Namikawa, “Animal Genetic Resources in Japan,” in S. Barker (ed.). Proceedings of the SABRAO Workshop on Animal Genetic Resources in Asia and Oceania. NEKKEN SHIRYO No. 47, Tropical Agricultural Research Centre, MAFF, Japan



These four breeds are now considered indigenous to Japan, but are not genuinely native cattle. There are two isolated populations of native cattle in existence. The Mishima wild cattle on Mishima Island (located in the Sea of Japan off Yamaguchi Prefecture) have never been crossed with modern European breeds. While they represent a genuine genetic curiosity, as of 1983 there were fewer than 40 head. The second, and more numerous, are a group of wild cattle on Kuchinoshima Island south-west of Kagoshima Prefecture. The progenitors of both the Mishima and Kuchinoshima cattle



were probably brought to Japan by the ancestors of the modern Japanese people more than 2,000 years ago. Biochemical and genetic tests indicate that the native cattle are more closely related to the cattle of Northern Europe and Scandinavia than they are to the cattle indigenous to Taiwan, the Philippines, and other South East Asian Countries.

The four modern Japanese breeds are the result of a substantial infusion of European blood during the Meiji Era, together with a government-sponsored selection programme initiated in 1919. For several decades prior to 1910, there was a great interest in importing European breeds to cross with native cattle. The basic aim was to improve the native strains for draught purposes, but better meat production was also a consideration. Exotic breeds were extremely popular and the price of pure-bred and cross-bred exotic animals often reached unreasonable levels, until the bubble burst in 1910. After

this date, the importation of European breeds went out of fashion.

After World War I, the Japanese Government decided to encourage the selection and registration of cattle exhibiting superior traits of both native and foreign types. There was a considerable gene pool to draw upon, as a wide range of European blood had been introduced to Japan. This variation, together with the original differences among the native cattle, permitted selection according to different criteria in various parts of the country. After World War II, the National Government moved to rationalize the registration process and formally recognized three major Wagyu types or breeds: Japanese Black, Japanese Brown, and Japanese Poll. The National Wagyu Cattle Registration Association was established in 1948.

The Japanese Black breed included several fairly distinct types, and this is still the case today (e.g. Tottori, Tajima,

and Hiroshima strains). The Japanese Shorthorn was not formally established until 1957.

After careful selection and breeding over the last five decades, there are slight differences in the concept of the “true type” for each breed, but many similarities. All four breeds have been selected for beef production alone for more than forty years. In all four breeds the aim is to produce a medium-sized, beef-type animal. All of the breeds are humpless but the bulls tend to develop a marked crest. While the ideal mature body weight and height at the withers differ marginally between the four breeds, the targets for the Japanese Black are typical:

While it is hard to generalize, two traits

	Male	Female
Body weight (kg)	940	560
Wither height (cm)	142	128

of the Japanese Black often cited as disadvantageous are their narrow pin bones and their relatively poor milking capacity. The narrow pin bones create calving difficulties if the cows are crossed with bulls of the large-framed European breeds (such as Holstein or Charolais). The poor milking ability increases the costs of raising feeder calves since the calves often need artificial supplements.

On the other hand, the Japanese Blacks (in particular the Tajima strain) are noted for their capacity to produce beef with a high degree of fat marbling (or sashi). It is this characteristic more than any other which accounts for the steady increase in the popularity of the Japanese Black breed.

According to the website of the California BBQ Association, “In order to protect its domestic beef industry, the Japanese government imposed strict laws that prohibited the export of any living Japanese Wagyu cattle. However, in 1976, four Wagyu animals were imported into the U.S.: two Tottori Black Wagyu and two Kumamoto Red Wagyu bulls. Then in 1993, two male and three female Tajima cattle were imported, and 35 male and female cattle (consisting of both red and black Wagyu) were imported in 1994.

“Most Kobe Beef today is bred and raised in California and Australia. For example, Harris Ranch in California is contracted with beef producers in Kobe to breed and raise their cattle in California, where land and grain is relatively inexpensive. The cattle is raised and fed under the exacting specifications for Kobe Beef. When the cattle is almost ready for slaughter, it is shipped to Kobe, Japan, where its feeding is completed, and the cattle is slaughtered.”

Photographs for Lucies Farm by Kjeld Duits



MARLOTHII

EMBRIO
DIENSTE



VIR MEER INLIGTING KONTAK
082 905 7997

WAGYU OUTSIDE OF JAPAN

FOUNDATION OF BLACK WAGYU, RED WAGYU AND AKAUSHI
THAT WERE EXPORTED FROM JAPAN

Australian Wagyu Association, www.wagyu.org.au
Wagyu International, www.wagyuinternational.com



**TOTAL OF 167
BLACK WAGYU IS
KNOWN TO HAVE
BEEN EXPORTED.**

21 calves registered from Japanese AI sires were born after the arrival of the heifers. 16 Red Wagyu/Akaushi bulls and heifers were exported and 6 registered births resulted. A total of 221 Wagyu cattle brought genetics from Japanese Black and Japanese Brown and they formed the basis of all Wagyu and Akaushi in USA, Canada and Australia. The second migration from those countries commenced globally from the late 1990s to Europe, South America then South Africa. Finally, herds have become established across the Pacific and Asia.

Four bulls were sent from Japan by Morris Whitney in 1976. Colorado University took semen collections then they were bought by Wagyu Breeders Inc. There were no Wagyu females in America so the original two Wagyu Black (Mazda from Tottori and Mt Fuji

from Hyogo) and two Wagyu Red bulls (Rueshaw and Judo from Kumamoto) were joined to Angus, Holstein, Hereford and Brangus cows in Texas.

By 1991 the highest percentage Wagyu bull in the USA was 63/64 and it was estimated that there were less than 300 Wagyu crossbred females of breeding age that were 3/4 Wagyu or higher. In about 1991 the narrow genetic base was widened when semen from the fifth bull Itotani was brought to Canada by Lakeside Industries at Brooks. In the fourth generation, the American Purebred (15/16) is obtained and contains 93.75% Wagyu genetics.

The Mannett Group (later to become World Ks) imported three Black Wagyu females (Suzutani and Rikitani – both Tajima - and Okutani - 75% Tajima and 25% Shimane) and two bulls (Michifuku - 94% Tajima - and Haruki 2 - 56% Tajima and 19% Shimane) in 1993. The first Fullbloods to be born in June 1994 outside Japan

were Rikihari in Canada, then Beijiro and Suzutani followed in USA. Later in the year the first live exports were transported from USA to Wally Rae in Australia.

The Mannett Group imported four black females (Okahana, Nakayuki, Kanetani and Nakagishi 5) and two black males (Kenhanafuji and Takazakura) in 1994. Calves born after arrival were Tanitsuru, Nakazakura, Kitaguni Jr and Reiko.

In this consignment were Red Wagyu imported by Dr Al and Marie Wood from selections made by Mr Yikio Kurosawatsu and Dr King in Kumamoto Prefecture.

Nine red females (Namiko, Ume, Namoi, Akiko, Haruko, Fuyuko, Dai 3 Namiaki, Dai 9 Koubai 73 and Dai 8 Marunami) and three red bulls (Shigemaru, Tamamaru and Hikari) are registered in the AWA but some reports state that only seven heifers were imported of which three were pregnant on arrival in USA. Calves born to AI (from Japanese sires Namimaru and Dai 10 Mitsumaru) were Big AI, Kaedemaru, Momigimaru, Ringo, 504 and 505. After the 180 days incubation that was required for quarantine, Namoi, Dai 3 Namiaki, Kaedemaru and Momigimaru went to Ontario in Canada. The remainder of the Red Wagyu/Akaushi herd in USA was sold to Englewood Farm in Texas. Subsequently most were transferred to Heart Brand.

Japanese Venture Partners imported three black bulls (Kikuyasu, Fukutsuru, Yasutanisakura), ten black females (Chisahime 662, Chiyofuku 992, Fukutomi 990, Kikuhana 298, Shigehime 208, Tokuhime 486,



TAJIMA

Originating in the Hyogo Prefecture of Japan, this strain is renowned to produce carcasses with very high marble scores. Tajima Wagyu are characterised by smaller frames with high marbling qualities, however typically cows have lower milking and lower growth rates than other strains. Famous Tajima sires include Michifuku and Terutani.

SHIMANE

Originating in the Shimane Prefecture of Japan, this strain is characterised by well-balanced qualities including good growth, fertility and milking rates. Dai 7 Itozakura is probably the most famous of the Shimane line. He was an outstanding sire with high marbling capabilities and excellent growth rates. His female offspring are excellent milkers.

TOTTORI OR KEDAKA

Originated in the Tottori Prefecture of Japan, this strain is characterized by larger framed cattle with good growth rates, good milk supply and overall balance. The famous Tottori bull Kedaka was born in 1959 and is considered to be one of the outstanding sires in this Tottori strain.

KOCHI & KUMAMOTO (RED WAGYU)

Originating in the Kumamoto Plateau in Kyushu Japan, these strains were strongly influenced by the Hanwoo Korean breed and European Simmental breed. These animals are characterized by their red colour with large frame size and good milk supply. These strains still produce marbling however are generally not as highly marbled as black strains such as Tajima



Yasufuji 1/4, Yoshifuku 2 and Yuriko 1), and two red heifers (Kunisakae and 27 Homare).

Mr Shogo Takeda exported 35 black females, many in calf, and five black bulls (Itomichi 1/2, Kikuhana, Itohana 2, Kinto and Terutani) in 1994. There are numerous females that have been registered with births during this period. Mannett imported 7 black females (Taguchi 9, Nakahana 5, Mitsutaka, Okuito 9, Hanateru 9, Rabito and Hisako) with one black bull (Yasufuku

Jr) in 1997. Calves were Taguchifuku, Kotomichan and Kousyun.

Chris Walker of Westholme imported 25 black females and three black males (Hirashigetayasu, Itomoritaka and Kitateruyasu Doi) to USA from ET Japan Company in Hokkaido in 1997. The following year another 59 females arrived together with semen from three black bulls (Shigefuku, Dai 6 Seizan and Kitatsurukiku Doi). The bulls remained but the females were exported to Australia. This consignment was diverse

with 44 Shimane and 28 Kedaka with 12 Tajima so injected milk and size with marbling. Dams which bred in Australia include: Hatsuko, Itoreiko, Kazuaki, Kitahikari 97/1, Kitakazu, Kitaokumi, Kitasakaedoi, Kitasekitori, Kitatizuru 2, Kunikiku 96, Masako, Masatoshi 2, Sakaehikari, Sekinakada 22, Sekiyuhou, Takakuni, Takashigedoi, Yamafuji, Yamaketakafuji 3 and Yuriyuhoi.

Takeda Farms imported 6 black bulls (Kikutsuru Doi, Itoshigefuji, Itoshigenami, Mitsuhiokura, Kikuterushige, Itozuru Doi). A Mishima bull (Kamui) - a native cattle breed from Mishima Island - was in this consignment. The indigenous cattle population on Mishima Island had been eliminated by Rinderpest disease in 1672. A few Japanese Black were transported over from mainland Japan to re-establish the herd, which has been in-bred for more than 25 generations. Mishima has high marbling but is smaller than the conventional Wagyu breeds of today. Kamui is registered as a Base animal (B115 with date of birth 28th August, 1991) to enable crossing with Wagyu. His progeny out of registered Fullblood dams are registered as Wagyu percentage (50% Wagyu) by the American Wagyu Association. The Takeda herd in USA was subsequently sold to Mr Gary Yamamoto in Canada.

THE NAMES OF BULLS, HEIFERS AND CALVES THAT WERE IMPORTED OR BORN FROM JAPANESE PARENTS ARE TABLED:

FOUNDATION BLACK WAGYU EXPORTS FROM JAPAN

Year	Importer	Black bull	Black heifer	Black calf born
1976	Morris Whitney	2 Mazda Mt Fuji		
1993	Mannett	2 Haruki 2 Michifuku	3 Okutani Rikitani Suzutani	
1994	Japanese venture partners	3 Fukutsuru 068 Kikuyasa 400 Yasutanisakura 931	10 Chisahime 662 Chiyoofuku 992 Fukutomi 990 Kikuhana 298 Shigehime 208 Tokuhime 486 Yasufuji 1/4 Yoshifuku 2 Yuriko 1	
1994	Mannett	2 Kenhanafuji Takazakura	4 Kanetani Nagagishi Nakayuki Okahana	4 Tanitsuru ♀ Nakazukura ♀ Kitaguni Jr ♂ Reiko ♀
1995	Takeda Farms	5 Itohana 2 Itomichi 1/2 Kikuhana Kinto Terutani	35	
1997	Westholme	3 Hirashigetayasu Itomoritake Kitateruyasu + semen from Dai 6 Seizan Kitatsurukiku Doi Shigefuku	84 Hatsuko Itoreiko Kazuaki Kitahikari 97/1 Kitakazu Kitaokumi Kitasakaedoi Kitasekitori Kitatizuru 2 Kunikiku 95 Masako Masatoshi 2 Sakaehikari Sekinakada 22 Sekiyuhou Takakuni Takashigedoi Yamafuji Yamaketafuji 3 Yuriyuhou	
1997	Takeda Farms	6 Itoshigefuj Itoshigenami Itozuru Doi Kikuterushige Kikutsuru Doi Mitsuhiokura		
1997	Mannett	1 Yasufuku Jr	7 Hanateru 9 Hisako Mitsutaka Nakahana 5 Okuito 9 Rabito Taguchi 9	2 Kotomichan ♀ Kousyun ♂
Total	173	24	143	6

RED WAGYU/AKAUSHI FOUNDATION ANIMALS EXPORTED FROM JAPAN

Year	Importer	Red bull	Red heifer	Red calf born	AI sire in Japan
1976	Morris Whitney	2 Judo Rueshaw			
1994	JVP		2 27 Homare Kunisakae		
1994	AI & Marie Wood	3 Hikari Shigemaru Tamamaru	9 Akiko Dai 3 Namiaki Dai 8 Marunami Dai 9 Koubai 73 Fuyuko Haruko Namiko Naomi Ume	6 Big AI ♂ Kaedemaru ♀ Ringo ♀ 505 ♂ Mornigimaru ♀ 504 ♀	2 Dai 10 Mitsumaru Dai 10 Mitsumaru Namimaru Dai 10 Mitsumaru Namimaru Dai 10 Mitsumaru
Total	22	5	11	6	2



ABSOLUTE WAGYU PTY LTD IS THE CULMINATION OF A SHARED PASSION AND VISION FOR THE WAGYU BREED

Absolute Wagyu consists of five shareholders. Four of which are in the veterinary industry and the fifth shareholder is a director in one of the major grain companies of South Africa.

VISION

To produce proven world class Wagyu genetics for the South African market.

MISSION

Absolute Wagyu is committed to the development of the Wagyu breed in South Africa by working together with all role players in the value chain – from seed stock producer right through to the final product on the shelf. To ensure long term success we only make use of proven Wagyu genetics.

In the local context we already have high marbling carcass data for some of our top breeding bulls. All genetics that we import are carefully selected on the individual performance indexes of each animal.

SERVICES

Besides the sale of genetics we also offer reproductive services to the Wagyu industry in the form of: semen freezing at our export certified bull station; artificial insemination; embryo flushing and transfer.

REPRODUCTIVE SERVICES

Dr Collin Albertyn
drcollin@absolutewagyu.com | +27 (0)83 448 2368

Mandy Albertyn
mandy@absolutewagyu.com | +27 (0)78 007 9855

GENETICS AND SALES

Dr Thomas Steyn
drthomas@absolutewagyu.com | +27 (0)82 773 2683

Dr Willie van Heerden
drwillie@absolutewagyu.com | +27 (0)72 299 1056

Three of the four veterinarians are specialists in reproduction of large and small stock (cattle, sheep and goats)

THE DIFFERENCE BETWEEN KOBE AND WAGYU BEEF



By John Cecala www.buedelmeatup.com



WAGYU BEEF IS INTENSELY MARBLED WITH SOFTER FAT,

HAS HIGHER PERCENTAGES OF MONOUNSATURATED FATS, OMEGA-3 AND OMEGA-6 FATTY ACIDS AND IS LOWER IN CHOLESTEROL THAN COMMODITY BEEF. THE COMBINATIONS OF THESE FATS DELIVER A DISTINCTIVE RICH AND TENDER FLAVOR COMPARED TO OTHER BEEF.

The most exclusive Wagyu in the world comes from Kobe, Japan. People use the terms Kobe and Wagyu beef interchangeably in the U.S. thinking it refers to the same premium imported Japanese beef, when it does not.

ALL KOBE IS WAGYU, BUT NOT ALL WAGYU IS KOBE

Many restaurant menus feature "Kobe Burgers" or "Kobe Steaks".

The internet is flooded with on-line companies offering Kobe Beef, Kobe Burgers, Kobe-Style Beef, and Wagyu beef. The truth is authentic Kobe beef is very rarely seen on restaurant menus in the USA.

Legitimate Kobe beef is priced around \$200 per portion for a steak, and \$50 for a burger. If you see something on a menu referred to as Kobe priced less than that, it is most likely domestic or imported Wagyu.

How can you tell the difference?

KEY TERMS & DEFINITIONS

Kobe A city in Japan and the capital city of the Hyōgo Prefecture. Kobe is also considered a region of Japan like Champaign is a region in France, and Parma is a region in Italy.

Wa Japanese or Japanese Style
Gyu The Japanese word for a Cow or Cattle

Wagyu Japanese or Japanese Style Cattle. Japanese cattle consist of four breeds: Japanese Black, Japanese Brown, Japanese Poll, and Japanese Shorthorn. Ox-like in structure, these breeds are bred for field work.

Tajima-Gyu The cow that Kobe beef comes from which is classified as a Japanese Black breed.

Kokusan-Gyu Refers to cattle which are raised domestically in Japan. Regardless of the country or breed, cattle are classified as "Kokusan-Gyu" if they have spent more than half of their life in Japan.

Japanese Meat Quality Score Japanese quality meat scores are qualified by four factors: marbling, color and brightness, firmness and texture, and fat color, luster and quality. Each factor is graded from 1 to 5, with 5 being the highest score.

BMS Beef Marbling Standard.

BMS is a score rating given to red beef for the amount of intramuscular flecks of fat which give the meat a marble like pattern.

FACTS & CRITERIA

Under Japanese law, Kobe beef can only come from Hyōgo prefecture (of which Kobe is the capital city) of Japan.

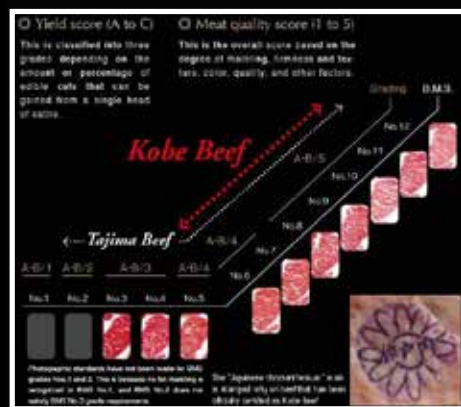
Kobe cows are fed a special diet of dried pasture forage and grasses such as rice straw with nutrition-rich feed supplements made by blending soybean, corn, barley, wheat bran, and various other ingredients. They are not fed pasture grass.

To be authentic certified Japanese Kobe Beef the following criteria need to be met:

- Breed of cattle is pure lineage Tajima (Tajima-Gyu), between 28-60 months of age, born, raised and

slaughtered in the Hyogo Prefecture of Japan.

- Certified as having a yield score of A or B.
- Japanese Meat Grading Association quality score of 4 or 5.
- BMS score of 6 or higher on the Tajima-Gyu marbling grading scale of 1-12.
- Has the "Japanese Chrysanthemum" seal officially certifying it as Kobe Beef.



This certification process is so strict that when the beef is sold in stores and

restaurants, it must carry a 10-digit number to identify the origination of the Tajima-Gyu cow.

Kobe Beef, Kobe Meat and Kobe Cattle, are also all trademarks in Japan. The United States does not recognize these trademarks thus promoting free use of the term "Kobe" in the US without regard to Japan's strict standards. Consequently restaurants and retailers market various types of American or Australian Wagyu beef as "Kobe beef".

Japanese beef was actually banned from being imported into the United States from 2009 until August of 2012. (The "first-ever" Kobe shipment is now on its way to the US according to Meating Place.) What we see most of domestically, is American Wagyu or Australian Wagyu (Kobe Style) beef.

AMERICAN WAGYU (KOBESTYLE)

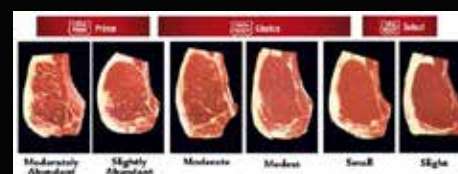
Four Wagyu bulls were brought to the USA in 1976 from Japan's Tottori

Prefecture for cross breeding with Angus cattle creating the American Wagyu Kobe Style Beef. The crossbred Wagyu cattle were fed a mixture of corn, alfalfa, barley and wheat straw mimicking the Japanese cattle diet. In the mid 1990's, about 40 more full blooded Wagyu male and females were imported to the US for breeding.

There a few domestic ranches raising pure blood American Wagyu beef today, however, most of what we see domestically are a Wagyu/Angus mixed breed. The Wagyu influence contributes to the intense marbling and the Angus influence contributes to the animal's size.

USDA MARBLE SCORING

The USDA scale for upper grade meat quality has 3 levels: Select, Choice, and Prime. Prime is the highest USDA grade. Roughly, 3% of traditional US cattle harvested are graded as Prime – equivalent to a Wagyu BMS score of 5. Over 90% of domestic Wagyu cattle



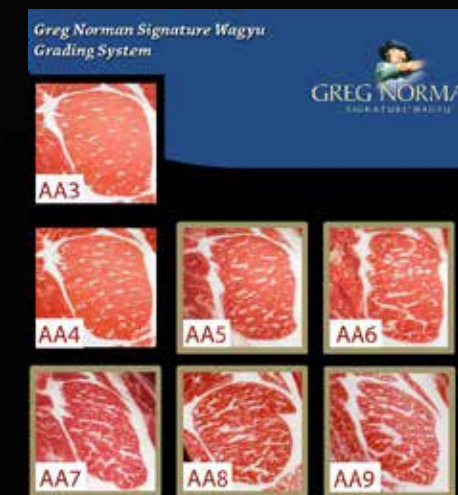
grade out as at least Prime, with most reaching a BMS score of 7-8. Wagyu's intense marbling occurs from genetics and from the cattle spending more time on special feed, about 30 months as compared to commodity beef cattle which are fed about 24 months. The Strube Ranch in Pittsburg, Texas is a notable American producer of quality domestic Wagyu beef.

AUSTRALIAN WAGYU (KOBESTYLE)

Australia first imported Wagyu in 1990 and began a breeding program using artificial insemination. In the mid 1990's Australia imported full blooded Wagyu bulls and cows from the United States to enhance their Wagyu breeding program. Over the years, the Australian Wagyu breed has gained in strength

and popularity for intense marbling and taste.

Different from the USDA and Japanese grading systems, the Ausie marble scoring range is 1 to 9+. One of the most notable brands of Australian



Wagyu beef is marketed under famed professional golfer and entrepreneur Greg Norman. Greg Norman Signature Wagyu beef is sold under BMS 5-11.

There are Canadian and European Wagyu producers, but most of the US



market is supplied through Australian imports and domestic purveyors.

Uber expensive and delicious, Wagyu's American popularity is growing. Remember, true authentic Japanese Kobe Wagyu is still a rarity in the US. When you see it on a menu, judge it by price. Ask your server if they can attest to the Kobe quality. If their response is at least somewhat knowledgeable to facts in this article, odds are it is authentic.



ADVANCED REPRODUCTION TECHNOLOGY

Services

- Conventional flushing of bovine embryos
- In vitro production of embryos
- Collection of bull semen
- Cryopreservation of embryos
- Quarantine facilities
- Registration of AI bulls
- Import and export of embryos and semen
- Livestock consulting



- @InVitro Africa
- @AfricaVitro
- @invitroafrica

invitroafrica.com

**Jy wil die beste wees...
Maak jy gebruik van die beste?**

Jou vennoot in dieregenetika

- DNA profiele
- Ouerskappe
- Mutasie-toetse



T: +27 72 626 2826 E: info@clinomics.co.za
www.clinomics.co.za

Posadres: Posbus 11186, Universitas, Bloemfontein, 9321, Suid-Afrika
Fisiese adres: Uitzichtweg, Bainsvlei, Bloemfontein, 9338, Suid-Afrika

WAGYU BREEDPLAN EBVs AND INDEXES



AUSTRALIAN WAGYU GENETIC ANALYSIS

The Australian Wagyu BREEDPLAN analysis provides the most thorough and accurate assessment of the Wagyu genetics available outside Japan. The analysis includes over 19,200 calves that have at least a weaning (200 day) weight recorded. This represents 42,306 dams and 4,177 sires. In addition, there are over 15,300 animals with birth weights and 15,800 with 400 day weights. Carcass data includes 3213 carcass weights, 1908 carcass EMA, 2791 carcass AUS-MEAT marble scores, 1872 camera marbling percent measures and 1756 camera fineness index measures.

ESTIMATED BREEDING VALUES (EBVs)

An animal's breeding value is its genetic merit, half of which will be passed on to its progeny. While we will never know the exact breeding value, for performance traits it is possible to make good estimates. These are

called Estimated Breeding Values (EBVs). The EBV is therefore the best estimate of an animal's genetic merit for that trait. EBVs are expressed as the difference between an individual animal's genetics and the genetic base to which the animal is compared.

ACCURACY

An accuracy value is presented with every EBV and gives an indication of the amount of information that has been used in the calculation of that EBV. The higher the accuracy, the lower the likelihood of change in the animal's EBV as more information is analysed for that animal or its relatives.

ACCURACY RANGE INTERPRETATION

LESS THAN 50% = Low accuracy and should be considered a preliminary estimate. The EBV could change substantially as more performance information becomes available.
50 - 74% = Medium accuracy, usually

based on the animal's own records and pedigree.

75 - 90% = Medium-high accuracy and usually includes some progeny information. Becoming a more reliable indicator of the animal's value as a parent.

90% AND ABOVE = High accuracy. It is unlikely that the EBV will change much with the addition of more progeny data.

FERTILITY AND BIRTH EBVs

Scrotal Size EBV (cm) is an indicator of male fertility in regards to semen quality and quantity. Higher (positive) EBVs indicate higher fertility. There is also a small negative correlation with age of puberty in female progeny.

Gestation Length EBV (days) is based on AI records. Lower (negative) GL EBVs indicate shorter gestation lengths which generally relate to easier calving and increased growth after birth.

Birth Weight EBV (kg) is based on the measured birth weight of animals, adjusted for dam age. The lower the value the lighter the calf at birth and the lower the likelihood of a difficult birth. This is particularly important when selecting sires for use over heifers.

GROWTH EBVs

200-Day Milk EBV (kg) is an estimate of an animal's milking ability. For sires, this EBV is indicative of their daughter's milking ability as it affects the 200-day weight of their calves.

200-Day Growth EBV (kg) is calculated from the weight of animals taken between 80 and 300 days of age. Values are adjusted to 200 days and for dam age. This EBV is the best single estimate of an animal's genetic merit for growth to early ages.

400-Day Weight EBV (kg) is calculated from the weight of progeny taken between 301 and 500 days of age, adjusted to 400 days and for dam age. This EBV is the best single estimate of an animal's genetic merit for yearling weight.

600-Day Weight EBV (kg) is calculated from the weight of progeny taken between 501 and 900 days of age, adjusted to 600 days and for dam age. This EBV is the best single estimate of an animal's genetic merit for growth beyond yearling age.

CARCASS EBVs

Carcass Weight EBV (kg) estimates the genetic difference in carcass weight at a standard age of 750 days. AUS-MEAT measured carcass weights from slaughter animals contribute to this EBV.

Eye Muscle Area EBV (cm²) estimates genetic differences in eye muscle area at the 12/13th rib site of a 400kg dressed carcass. More positive EBVs indicate larger eye

muscle area and therefore higher retail beef yields. AUS-MEAT and Japanese Digital Image Camera measured Eye Muscle Areas from slaughter animals contribute to this EBV.

Rib Fat EBV (mm) estimates the genetic differences in fat depth at the 12/13th rib in a 400kg dressed carcass. More positive EBVs indicate more subcutaneous fat and earlier maturity. AUS-MEAT Rib Fat measurements from slaughter animals contribute to this EBV.

Rump Fat EBV (mm) estimates the genetic differences in fat depth at the P8 site of a 400kg dressed carcass. More positive EBVs indicate more subcutaneous fat and earlier maturity. Retail Beef Yield Percent EBV (%) represents total (boned out) meat yield as a percentage of a 400kg dressed carcass. A more positive EBV indicates higher percentage yield for the 400kg carcass weight.



NEW CARCASS EBVs

Marble Score EBV (AUS-MEAT Marble Score) is an estimate of the genetic difference in the AUS-MEAT Marble Score in a 400kg carcass. A higher more positive value indicates that the animal has genes which produce more marbling (intramuscular) fat. AUS-MEAT measured Marble Score and Japanese Digital Image Camera measured Marbling Percent from slaughter animals contribute to this EBV.

Marble Fineness EBV (Marbling Fineness Index) is an estimate of the genetic difference in the Marbling Fineness Index (degree of fineness of marbling fat) as measured by the Japanese Digital Image Camera. Sires with higher EBVs are expected to produce progeny with higher levels of marbling fineness.

FULLBLOOD TERMINAL INDEX

The Fullblood Terminal Index utilises the Carcass Weight EBV and the Marble Score EBV because these are the traits which determine the price of Wagyu carcasses.

The assumptions used to calculate the Index are a 420kg carcass, a base price of \$8.50/kg carcass weight and an increase/decrease in value of the carcass of \$1kg per marbling score. It is assumed that only half of the difference in EBVs will be passed on to the progeny because only half the genes come from the sire.

If a sire has a Carcass Weight EBV of 0 and a Marble Score EBV of +0.0 it will have an Index of zero.

If a sire has a Carcass Weight EBV of +20kg and a Marble Score EBV of +2.0 the value of the additional 10kg of carcass weight is \$85 (10kg @ \$8.50) and the value of one additional marble score is \$420 (420kg @ \$1). The sire will have an Index of +\$505 (\$85 + \$420). This sire will on average add \$505 to the value of its progeny compared to a sire with a zero Index.

If a sire has a carcass weight EBV of -20kg and an Marble Score EBV of -2.0 the reduction in value due to the reduced carcass weight will be -\$85 (-10kg @ \$8.50) and the reduction in value to the one less marble score will be -\$400 (400kg @ \$1). It will have an Index of -\$485 (-\$85 -\$400). The value of the progeny of this sire will on average be \$485 less than a sire with an Index of zero.

WAGYU - PERCENTILE BANDS FOR 2015 BORN CALVES

Percentile Band	Gestation Length (days)	Birth Wt (kg)	200 Day Wt (kg)	400 Day Wt (kg)	600 Day Wt (kg)	Mat Cow Wt (kg)	Milk (kg)	Scrotal Size (cm)	Carcass Wt (kg)	Eye Muscle Area (sq cm)	Rib Fat (mm)	Rump Fat (mm)	Retail Beef Yield (%)	Marble Score	Marble Fineness (%)	Terminal Carcass Index
Top Value	-3.1	-3.9	+33	+49	+70	+80	+12	+3.8	+44	+6.6	+4.9	+6.0	+2.5	+1.8	+0.48	+475
Top 1%	-2.0	-1.9	+22	+35	+48	+54	+9	+2.5	+32	+4.3	+1.8	+2.8	+1.3	+1.3	+0.39	+332
Top 5%	-1.2	-1.0	+18	+29	+39	+44	+7	+1.6	+27	+2.9	+1.3	+2.2	+0.8	+1.0	+0.30	+251
Top 10%	-0.9	-0.5	+16	+25	+33	+37	+6	+1.1	+23	+2.3	+1.1	+1.9	+0.6	+0.8	+0.26	+222
Top 15%	-0.7	-0.2	+14	+23	+30	+33	+5	+0.9	+21	+1.9	+0.9	+1.7	+0.4	+0.7	+0.23	+202
Top 20%	-0.5	+0.1	+13	+21	+28	+31	+4	+0.7	+19	+1.7	+0.8	+1.5	+0.3	+0.6	+0.21	+189
Top 25%	-0.4	+0.2	+12	+20	+26	+28	+4	+0.5	+18	+1.5	+0.7	+1.3	+0.2	+0.6	+0.19	+177
Top 30%	-0.3	+0.4	+11	+18	+24	+26	+3	+0.4	+17	+1.3	+0.6	+1.2	+0.1	+0.5	+0.17	+167
Top 35%	-0.2	+0.5	+11	+17	+22	+24	+3	+0.3	+16	+1.2	+0.6	+1.1	+0.0	+0.5	+0.16	+157
Top 40%	-0.1	+0.6	+10	+16	+21	+23	+2	+0.2	+15	+1.0	+0.5	+0.9	-0.1	+0.4	+0.14	+147
Top 45%	-0.1	+0.8	+10	+15	+20	+21	+2	+0.1	+13	+0.8	+0.4	+0.8	-0.2	+0.4	+0.13	+139
Top 50%	+0.0	+0.9	+9	+14	+18	+20	+2	+0.0	+12	+0.7	+0.3	+0.7	-0.3	+0.4	+0.12	+130
Top 55%	+0.1	+1.0	+9	+13	+17	+18	+1	-0.1	+11	+0.5	+0.3	+0.6	-0.3	+0.3	+0.10	+122
Top 60%	+0.2	+1.2	+8	+12	+16	+17	+1	-0.2	+10	+0.3	+0.2	+0.4	-0.4	+0.3	+0.09	+114
Top 65%	+0.3	+1.3	+8	+11	+15	+15	+0	-0.2	+9	+0.1	+0.1	+0.3	-0.5	+0.2	+0.07	+106
Top 70%	+0.4	+1.4	+7	+10	+13	+13	+0	-0.3	+8	-0.1	+0.0	+0.2	-0.6	+0.2	+0.05	+95
Top 75%	+0.5	+1.6	+6	+9	+12	+11	-1	-0.4	+7	-0.3	-0.1	+0.0	-0.7	+0.2	+0.04	+85
Top 80%	+0.6	+1.8	+5	+8	+10	+9	-1	-0.5	+5	-0.6	-0.2	-0.2	-0.8	+0.1	+0.02	+73
Top 85%	+0.8	+2.1	+5	+7	+8	+6	-2	-0.6	+4	-0.9	-0.3	-0.4	-1.0	+0.0	-0.01	+59
Top 90%	+1.0	+2.4	+3	+4	+5	+3	-3	-0.8	+2	-1.4	-0.5	-0.6	-1.1	-0.1	-0.04	+42
Top 95%	+1.3	+2.9	+1	+2	+1	-3	-5	-1.1	-1	-2.1	-0.7	-1.1	-1.4	-0.2	-0.09	+12
Top 99%	+2.2	+4.0	-3	-5	-9	-14	-8	-1.6	-6	-3.4	-1.2	-2.0	-1.8	-0.5	-0.19	-44
Low Value	+4.0	+6.7	-10	-18	-28	-33	-12	-2.9	-20	-5.2	-1.9	-3.0	-2.5	-1.2	-0.40	-156

WAGYU X ANGUS CROSSBREEDING ADVANTAGE

F1 WAGYU BRING MORE MONEY

a **MOVE INTO THE PRODUCTION OF F1 WAGYU WAS 'THE BEST AGRIBUSINESS DECISION WE'VE EVER MADE' ACCORDING TO ONE OF THE NATION'S LEADING ANGUS SEEDSTOCK PRODUCERS LOCK ROGERS OF WATTLE TOP ANGUS, GUYRA, NSW.**

At the moment there is a clear margin of well over \$300/head over similarly weighted Angus or Hereford weaners although Mr Rogers admits Angus weaners of the same age have a 10% weight advantage.

When Wattle Top started using Wagyu semen across Angus cows in 1993, the first F1 drop brought 60c/kg more than Angus steers and a decision was made to continue to focus on F1 production while still maintaining a large performance recorded Angus herd. Last year the annual Wattle Top Angus bull sale grossed over \$750,000 and averaged \$8080 for 94 bulls to make it one of the top bull sales of the year for any breed. In the 90s F1 production was so lucrative there were not enough Angus replacement heifers produced so Arthur Cox's Angus heifers were purchased for \$400 while the Wagyu F1 heifers could be sold for \$800.

"That didn't last too long as others discovered the quality of the Cox heifers and the Wagyu price went up," said Mr Rogers.

For the first five years of the operation all F1 steers and heifers went to Whyalla feedlot in southern Queensland at around \$3/kg while Angus were bringing \$1.15/kg.

Market uncertainty created by Japan's 2001 E.coli scare in 2001 resulted in a change of available outlets with Aronui and Rangers Valley feedlots joining the market options along with the live boat trade to Japan contributing to demand over the past four to five years.

\$800 to \$850 was there for 300kg eight to nine months F1 calves straight off their dams according to Mr Rogers who said one mob of F1 weaners averaged 335kg with the tops at 390kg, only slightly behind straight Angus.

But Mr Rogers warned the F1s need to be carefully managed and put on creep feeders if necessary. F1 weaning is in April while Angus are weaned earlier in February/March. The tops of the F1 steers were weaned in March this year straight onto the boat. In fact 90% of the F1 steers will make the live export weight of 300kg off their mothers by April.

In 2005 Wattle Top started breeding some full bloods (pure Japanese) mainly to supply their own bulls and now run a breeding herd of 70 full bloods selling about 15 to 20 full blood bulls a year.

Last spring there was strong demand for Wattle Top's Wagyu bulls selling to Young, Barraba, upper Murray, central Queensland with Macquarie Bank's Paraway Pastoral Co being another to venture into Wagyu genetics. Mr Rogers uses high content Tajima bulls (usually 100% Tajima) and top quality high marbling and high growth Angus heifers and cows.

"I only sell Wagyu bulls to producers who fully understand the marketing situation," said Mr Rogers.

"I tell them to talk to feedlots, exporters and other potential buyers and have some plan in place before going into F1 production".

The correct genetics are also important with several strains of Wagyu available with different attributes. One aspect of Wagyu production has changed Mr Rogers' attitude to bone.

Wagyu are light boned but produce high quality beef which led him to appreciating lighter bone in Angus. He believes the lighter bone is also denser and stronger thus improving yield. "The F1 job has been fantastic and most rewarding but not for everyone," he said.

INDEX NAME CHANGE FROM FTI TO TCI

HOW IS IT CALCULATED?



t **HE CALCULATION USED FOR GENERATING THE TERMINAL CARCASS INDEX UTILISES THE CARCASS WEIGHT EBV AND THE MARBLE SCORE EBV OF AN ANIMAL TO PROVIDE AN ESTIMATE OF THE GENETIC CONTRIBUTION TO THE VALUE OF THE CARCASS OF THEIR SLAUGHTER PROGENY.**

The assumptions used to calculate the TCI are a base price of \$8.50/kg carcass weight and an increase/decrease in value of the carcass of \$1kg per marbling score. It is assumed that only half of the difference in EBVs

will be passed on to the value of the carcass from slaughtered progeny because only half the genes come from the sire or dam. For example: If a sire has a Carcass Weight EBV of 0 and a Marble Score EBV of +0.0 it will have an Index of zero.

If a sire has a Carcass Weight EBV of +20kg and a Marble Score EBV of +2.0 the value of the additional 10kg of carcass weight is \$85 (10kg @ \$8.50) and the value of one additional marble score to the carcass is \$430 (430kg @ \$1).

The sire will have an Index of +\$515 (\$85 + \$430). This sire is estimated to add an average of \$515 to the carcass

value of its slaughtered progeny compared to a sire with an Index of zero.

If a sire has a carcass weight EBV of -20kg and an Marble Score EBV of -2.0 the reduction in value due to the reduced carcass weight will be -\$85 (-10kg @ \$8.50) and the reduction in value due to one less marble score to the carcass will be -\$410 (410kg @ \$1). The sire will have an Index of -\$495 (-\$85 -\$410).

The value of the carcass from the slaughtered progeny of this sire is estimated to be on average \$495 less than a sire with an Index of zero.

Australian Wagyu Association, www.wagyu.org.au

Top Steer Prices (c/kg Live)



Information supplied by



- ✓ July 2015 thru August 2016 the average profit gain between the top price Angus v top price F1 is 29%.
- ✓ The average profit gain between the average Angus price and the average F1 price is 64%.
- ✓ The difference between the top F1 price and the average Angus price is 103%.

Australian Wagyu Association, www.wagyu.org.au, www.wag-you.com, AuctionsPlus

WAGYU CARCASSES

\$17,000 A WAGYU CARCASS IS SERIOUS BUSINESS IN JAPAN'S WHOLESALE MEAT MARKET

WATCHING INDIVIDUAL HIGH-QUALITY WAGYU CARCASSES SELL

FOR THE EQUIVALENT OF \$17,000 AUSTRALIAN LEFT AN INDELIBLE IMPRESSION ON THE AUSTRALIAN WAGYU TRADE MISSION TOUR GROUP ON THE FIRST DAY OF THEIR 2017 STUDY TOUR TO JAPAN.

The visit to Tokyo's famous Metropolitan Central Wholesale Market was one of the first destinations on the two-week study tour itinerary.

The publicly-owned facility in the inner-city area of Shinagawa is the largest wholesale meat centre in Japan, accounting for more than 130,000 beef carcasses sold each year, plus 210,000 bodies of pork.

While some carcasses are transported in for sale from other locations, the centre also provides Japan's largest abattoir service, processing about 90,000 head of cattle each year.

What's surprising about that is that it happens efficiently and almost anonymously, in the middle of a heaving city of 32 million people. The facility, from the outside, bears no resemblance to a typical Australian abattoir facility, looking like any other large commercial-type building in the metropolis. The only cue to its purpose is a massive cold storage vehicle loading bay at one end, and a small livestock receival area.

The main auction sale room carries an overhead rail, on which the catalogue of each day's sale carcasses progresses.

Each carcass is rolled forward, and a gallery of accredited buyers, representing 25 or 30 meat wholesale groups and large retailers, crowds around with torches to inspect each body for marbling and other traits. Carcasses by this stage has been independently graded and branded for meat quality and yield, using a 22-point set of criteria. Yield is based on an A-C grade, and meat quality 1-5, with the ultimate 'A5' carcasses amounting to only 1-2pc of bodies sold each day.

Carcass weights were incredible, by Australian standards, with 500kg bodies common, and even 600kg bodies reasonably routine. Some bodies recently have broken the scales at more than 700kg.

Unlike open auction familiar in Australia, the method of sale was a silent auction, with each wholesaler representative using a small wireless device in his pocket to post bids on each individual carcass, displayed on a giant screen above the auction area. The very best carcasses could be up to ten times the value of base level carcasses, the group was told.

Carcasses from crossbred Wagyu cattle typically sold for around 1500 Yen per kg, while Fullblood carcasses sold in a typical range from 2000 to 3000 Yen per kg, depending on quality. One of the best carcasses to pass through the auction during the Australian visit made 2700 Yen/kg, valuing the 550kg carcass at 1.485 million Yen, or the equivalent of about \$17,000

Australian. The AWA tour group was told that the last day of the month, trading volume was down because most buyers had already hit their inventory targets for the month. Today's catalogue involved about 400 bodies, while regular sales account for an average of 500, split roughly equally between Fullblood (purebred) Wagyu, and crossbreds. The cattle came from a large area of Japan, including the northern island region of Hokkaido.

Food safety and sanitation control were high priorities, the tour group was told. More than 16 years after Japan's isolated BSE event, every single carcass slaughtered is still tested for BSE, with all specified risk (nervous system) material removed and destroyed in high-temperature furnaces.

Australian Wagyu Association
www.wagyu.org.au

PUREBRED VS FULLBLOOD WAGYU

WHAT ARE THE DIFFERENCES BETWEEN FULLBLOOD, PUREBRED AND F1, F2, F3 WAGYU IN TERMS OF THE LIVESTOCK ?

Australian Fullblood Wagyu are 100% direct descendants of Japanese herdbook livestock, and these animals are directly comparable to those in today's Japanese home herd. DNA

parent verification has confirmed this direct lineage for all animals registered in the Australian Wagyu Association Herdbook. Purebred, F3, F2 and F1 are crossbred Wagyu defined under the Wagyu Breed Trade Descriptions as:

The offspring of a Wagyu full blood sire and a Wagyu full blood dam whose forebears originate from Japan and whose pedigree shows no evidence of any crossbreeding

WAGYU FULLBLOOD

100%

PUREBRED WAGYU F4

93+%

Has greater than 93% Wagyu genetic content. For example, the result of at least four generations of crossbreeding using a Wagyu full blood sire and a crossbred Wagyu F3 dam

LEVEL OF WAGYU MANAGEMENT

87+%

CROSSBRED WAGYU F3

Has greater than 87% Wagyu genetic content. For example is the result of at least three generations of crossbreeding, using a Wagyu full blood sire and a crossbred Wagyu F2 dam

Has 50% of higher Wagyu genetic content. For example the first generation of crossbreeding a Wagyu full blood sire and the dam of a another breed

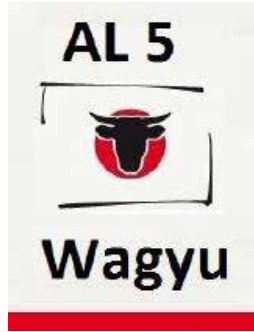
CROSSBRED WAGYU F1

50%

CROSSBRED WAGYU F2

Has 75% of higher Wagyu genetic content. For example is the result of at least two generations of crossbreeding, using a Wagyu full blood sire and a crossbred Wagyu F1 dam

Australian Wagyu Association
www.wagyu.org.au



The introduction into Wagyu from our side, started much like a “college project”. Samuel Pauw who drives AL5, had the dream to produce top quality food for the ordinary man. Meat, nuts, fruit, berries and other agricultural products came under investigation. His first real agricultural project, Bullhill Pecan Tree Growers, on the Vaalharts Irrigation Scheme near the Spitskop Dam in the Northern Cape Province of South Africa, had his initial dream in mind.

In 2013 he planned the first visit to Australia, to find out more about Wagyu. Hence, he, his wife, Drea and Dr Floris Coetzee went to visit all the possible breeders in Australia.

They flew into Brisbane, rented a car, and set off into the country “down under”. He met up with an old business college, Andries Potgieter, whom is currently employed by the University of Queensland, in Toowoomba whom arranged a visit to a feedlot company in the Darling Downs.

From there they met up with Barbara Roberts-Thompson whom introduced them to the Australian Wagyu Associations’, Graham Truscott, and Sam Hughes from the well-known Hughes Pastoral Company. Subsequently they visited Pete Bishop and his father



from Kuro Kin near Scone, and their final visit was to Robert Reed from Mazda Wagyu in Victoria. The main aim of this venture was to learn and see whether AI5 were going to clime “Mount Wagyu.”

Six months later, Samuel, without the consent of the other five from AI5, bought their first Wagyu. Two young pregnant F3 cows with calves on foot from Brian Angus of Woodview Wagyu at record prices, more than R 200 000 a cow.

Since then AI5, bought bulls, import semen and embryos, visited Australia again for the World Wagyu Conference and outback tour, build a network, and started with their breeding program.

The highlight of our involvement was our tour to Japan. The 11th National Exhibition is to be held at Sendai-shi in Miyagi prefecture during five days in September 2017.

Their first Fullblood Black Wagyu embryo calves have been born, their first Fullblood Red Wagyu, also known as Akaushi, embryo calves have been born.

Now, the future is their oyster, AI5 Wagyu is set to the challenge of the dream to produce “the world’s best tasting tender beef!”

Samuel Pauw • AL5 Wagyu • 084 700 9700
www.al5wagyu.com • samuel.pauw@terraworks.co.za



During the past 10 years commodity beef prices moved sideways, unable to keep up with increasing farm prices. Worldwide the emphasis is and has been on beef quality and taste. The South African grading system, where meat grading is based on age and fat covering, we concentrate more on tenderness than on taste as such.

After an in depth analysis of the Beef Industries in S.A. and Worldwide, we as a family decided that it was time to change and acquired our first Wagyu breeding stock in March 2015. Soon after that Johan and Dr Dave Midgley visited the 2015 World Wagyu Conference in Australia. After the conference they went on the Post conference tour and also visited various Wagyu farmers and Feedlots specializing in Wagyu feeding. This was a mind changing experience and while they were there our first “imported genetics” was acquired and a partnership with the Binnie Family was established.

Wagyu beef is different! Every tasting has been an “eating experience” with the emphasis on taste and eating quality. We believe that this is where the future of beef in S.A, also lies and decided to get on board this journey. We as a family see the Wagyu industry as a long term venture with future export opportunities. This you can see by the numbers of calves that were born here in 2017! We are obviously concerned about people who are “climbing onto the bandwagon” for short term gain.

The Australian market has matured after 25 years and Wagyu/Angus F1 weaners still fetch up to 70% premium over pure-bred Angus weaner calves. Wagyu crosses bred and raised in the Australian Outback not only prove the hardiness and adaptability of the breed, but are also fetching premium prices.

GENETICS

Determined to acquire the best Wagyu genetics available, we partnered with Steve Binnie, an Australian Wagyu farmer and CEO of the Delta Wagyu International. After multiple trips to Australia, we decided to acquire a stake in Delta Wagyu and to further establish Delta Wagyu South Africa, a joint venture between the Du Plessis and Binnie families. This joint venture strives to stay ahead of competitors by analysing market trends and movements and by then acquiring the best possible genetics.

It took us 2 years of planning and hard work to get the “right genetics” in export centres in Armidale, New South Wales and in Camperdown, Victoria. Embryos comply to the requirements and are eligible for export to both Africa, China and Europe. These



cows are being inseminated with some of the best, proven bulls available in Australia.

FARM

We are in process of building our Full-blood as well as our Pure-bred herds.

Our first 2017-calves are starting to lose their winter coats and they handled the cold Eastern Free State winters really well.

All our Angus, Simmentaler, Simbra and Bonsmara commercial cows are all being bred to black Wagyu bulls through AI with follow-up bulls. In this way we are building up a pure-bred herd starting with F1 heifers.

A big “positive” for us was that the average weaning weight of the 400+ calves from our 2016 F1-crop, was 223 kg at 7 months of age! This proved to us that Wagyu’s do grow if you use the right genetics and if you look after them!

FUTURE

We are feeding our own calves and are currently buying in Wagyu and Wagyu-crosses at a premium for our feedlot in Prieska in the Northern Cape.

From 2018 onwards we’ll be doing contract feeding for any Wagyu calf producer who wants to keep ownership of his calves throughout the value chain.

Our vision is to get involved in the whole value chain from “Paddock to Plate”. We are extremely excited about our first grain fed calves which are growing according to plan and will be entering the market early in the New Year.

Get BIG, get TOGETHER or STAY OUT

Johan Du Plessis • Delta Wagyu South Africa
082 788 5378 • www.deltawagyu.co.za
joeduplessis@gmail.com



Kobe Stud Breeding has grown from a family line of farming in vegetables, game, dairy and now has built a reputation of supplying excellent genetics to the South African Wagyu beef industry.

Kobe Stud Breeding continually seek out and improve the genetic material in our aim to reproduce top quality Wagyu with the help of experienced veterinary scientist, embryologist, nutritionists and beef masters.

All our animals are destined for beef production. To ensure the

highest marbling quality, we raise all our Wagyu animals on high quality feeds produced by experts from Karoowater Feeds. A stress free, clean environment and water also play an important part of our breeding program.

We are passionate about the Wagyu industry and firmly believe in the integrity that our clients deserve. Kobe Stud Breeding aim to supply exceptional animals in the best condition to our buyers, whether it is your only business or your newly investment portfolio and are committed to give every client our very best service.

We welcome our clients to visit us in Cradock to share our experience and walking together into the future of the South African Wagyu industry.

Jacques le Roux * Kobe Stud Breeding • 082 320 2808 • www.kalharoo.co.za • jacques@freroux.com



WINTERBERG
WAGYU
EST. 2014

Winterberg Wagyu can be traced to the foothills of the Winterberg Mountain Range in the Eastern Cape Province of South Africa. We live in a unique natural haven nourished by winter snowfalls and summer rainfall. It's here in these rolling hills that we produce our Wagyu.

The Scott Family have traditionally farmed with Dohne Merino sheep and Angus cattle. In an effort to gain exposure to export markets we decided to diversify into Peony cut flowers and Wagyu.

We established a full blood Wagyu herd in 2014 with the aim of using these genetics to produce F1 Wagyu/ Angus. Our Fullblood Wagyu have been primarily selected for F1 production traits which include marbling and growth. We have only used imported genetics thus far to grow our herd.

We are very positive about the future of Wagyu beef and we will continue growing our fullblood herd to include some of the best genetics available.

Andrew Scott • Winterberg Wagyu • 072 279 7942
www.winterbergwagyu.com
as@winterbergfarming.com



The Angus family brought the Wagyu breed to South Africa in 1999, with foundation Japanese genetics from Mr Shogo Takeda.

Die Angus-familie het die Wagyu ras na Suid Afrika toe gebring in 1999, met genetica vanaf die bekende Japanse teler Mnr. Shogo Takeda.

By Woodview het ons deur die jare sterk op Wesholme-bulle staatgemaak om groot raam koeie te produseer wat met sterk kalwers met marmering. Die fondasie bullyne wat gebruik word, is ETJ001, ETJ 002, ETJ003, TF151 Itozurudo, TF148 Itoshigenami, TF147 Itoshigefugi, TF Itomichi 1/2 and TF Terutani 40/1. Alle Wagyu- en Wagyu x-Angus F1-kalwers word verwerk op die plaas se uitvoer geakkrediteerde ontbeningsaanleg waar "Woodview" gebrandmerkte beesvleis op plaaslike en internasionale markte verkoop word.

Woodview is trots om vennote te wees in 'n gesamentlike onderneming met die Van Reenen-familie van Sparta en ons koop Wagyu- en Angus-kalwers om te voer en te bemark onder die "Big Beef Company" -merk. Vier van die vroulike diere wat te koop aangebied word, staan tans by spoelstasies.

Woodview are proud to be partners in a joint venture with the Van Reenen family of Sparta and together we purchase Wagyu and Angus calves to feed and market under the "Big Beef Company" brand. Four of the females on offer at the sale are presently standing at flushing stations.

Brian Angus • Woodview • 082 573 9687 • www.woodview.co.za • woodview@mweb.co.za



My brother and I (Dieter & Louw de Bruin) were born and raised in the Kalahari region of South Africa ("Ver in die ou Kalahari"). It was here where our love for farming and for "red cattle" was established. Since childhood we were taught to Love, Respect and Manage the land you farm on!

After obtaining our Honours Degrees in Marketing and Engineering at U.O.F.S. we decided to establish our first business in Bloemfontein. During this time we started our part-time farming operations. In 1996, after selling off our first business, we acquired our first "red cows" which we bred to Bonsmara bulls.

We believe that a scientific approach, the use of technology and being innovative are the cornerstones on which we as farmers will not only stay on the forefront, but also ensure a future for ourselves and our children. Adaptability will ultimately lead to longevity!

Since we started all our calculations and planning was geared around maximizing profit (Rands) per hectare. We also believe that measuring and accurate recordkeeping should form the basis of any successful farming activity. Without these, proper and accurate decisions cannot be made.

Farming with Bonsmaras suited our dreams perfectly and has led to us establishing the Xhariëp Bonsmara Stud in 2009. In our endeavours to always learn more things and to always strive on improving what we are doing, we came across information on the Wagyu breed and on "Kobe Beef". After our first taste of Wagyu beef, "WE WERE SOLD"!

We immediately saw this as an opportunity and a potential way of add value, not only to our own cattle, but also to the whole Cattle Industry of S.A.

After doing our "homework" and because of our love for "red cattle", we decided on going for Red Wagyu or Akaushi Cattle as they are also known. This breed comes from the Mount Aso region in the Kumamoto prefecture (state) of Japan and was developed to grow and marble on grass. They are also known to cross well on Bos taurus breeds, Brahman, Nelore and Zebu cattle as well as on the Bos indicus Black Wagyu. "Reds" will also significantly improve the quality of carcasses while bringing hybrid vigour, resulting in a heavier calf at weaning, as well as maintaining the renowned lower birth weights of Wagyu cattle. Furthermore they have a thick loose skin making them ideally suited to hot and humid conditions. The Kumamoto region has external parasites and tick borne diseases. Adaptability to these



was part of the development of the breed!

Our first imported embryos were implanted in the Spring of 2015 during the toughest part of our recent drought and despite initial low conception rates, we persevered and today have an established and growing Red Wagyu stud running concurrently with our Bonsmaras.

Our Aim would be to establish ourselves as the leader in producing Red Wagyu's that are fertile and well adapted to South African conditions, with good growth potential. Fairydale – 'n familieplaas van die de Villiers familie is gelee tussen Bethulie en Smithfield in die Suid-Vrystaat. In hierdie soms dorre, maar vrugbare land het 'n Rooi Wagyu (Akaushi) kudde sy rus kom kry. Hierdie prentjiemooi wêreld met sy goeie mengsel van rooigras, soetgras, rantjiesveld en suiwer water uit die dolomietgesteentes leen hom ideal tot die teling van die Rooi Wagyu's onder ekstensiewe toestande. Dit is hier waar ons optelkinders in die Here se hand versorg word!

Coenie de Villiers se beheptheid met die Karoo maak nou sommer baie sin...

It is with great pride that we offer you our first full blood progeny.

Wagyu breeding in S.A. has only really taken on recently and we believe in the future of the breed in S.A.

Don't be a follower – THE TIME TO START IS NOW

Dieter & Louw de Bruin • Xhariëp Farming • 083 262 1230 • www.certifiedwagyu.co.za • dieter.debruin@astrazeneca.com



CERTIFIED
Wagyu
BREEDERS AUCTION

AUCTION CATALOGUE 2017



WILDSWINKEL
maklik eerlik direk

Saturday 21 October 2017

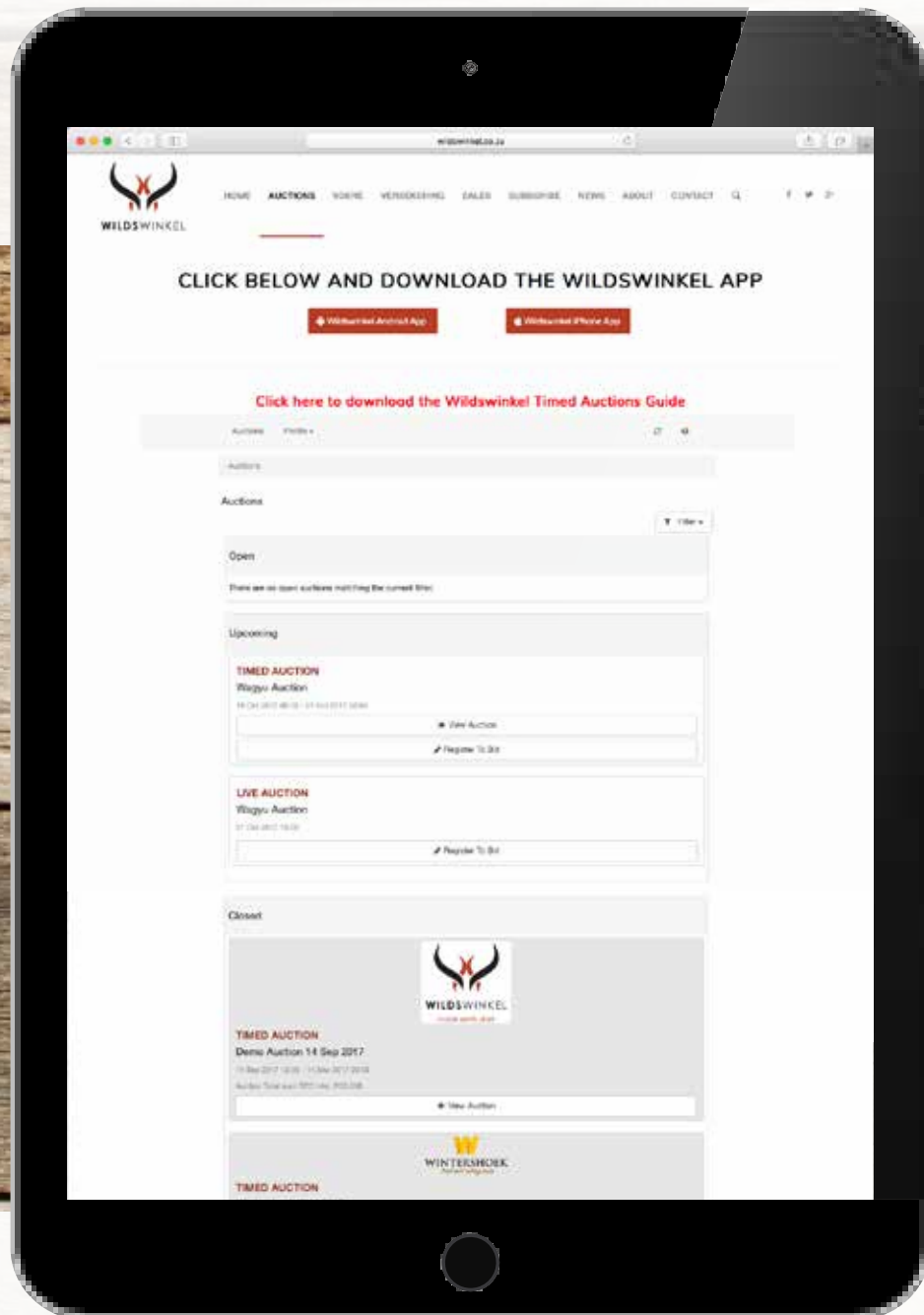
Atterbury Theatre, Lynnwood Bridge,
4 Daventry Street, Lynnwood Manor, Pretoria

NO RESERVE AUCTION

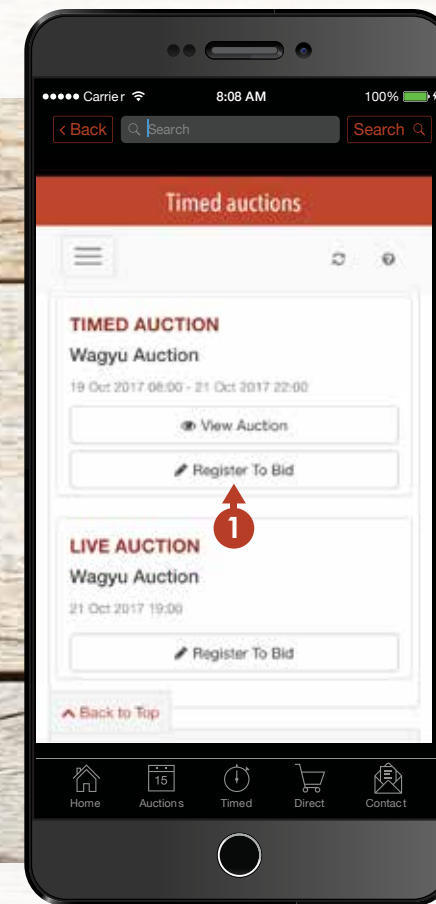


CERTIFIEDWAGYU.CO.ZA

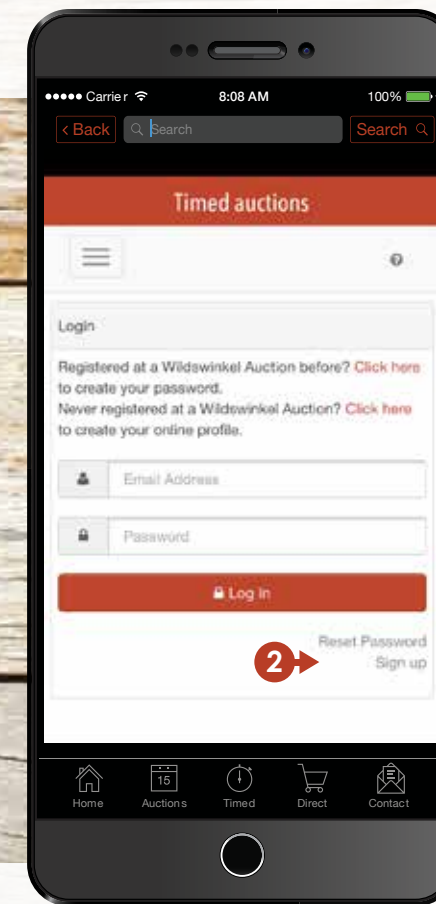
Register online at wildswinkel.co.za for live and timed auctions



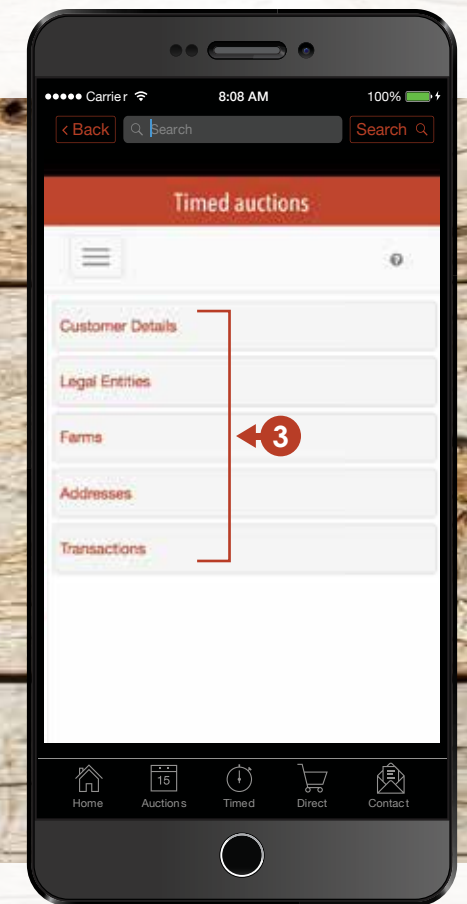
Download the Wildswinkel cellphone app to register and bid



1 Easily register to bid ahead of any listed auction online at your convenience



2 If you haven't created a profile yet, register as a user and validate your e-mail address and mobile number



3 Update your billing details and other information at a time that suits you

You can register online for auctions, whether it's an online or a live auction! Simply create a user profile (one time only!) and click on 'Register to Bid' for the relevant auction. You will receive a bidder number and should it be a live

auction, simply collect your number at the registration desks on the day. No paper, no scans, no waiting in line!

In case of a query please mail: support@wildswinkel.co.za



WILDSWINKEL
maklik eerlik direk



LOT 1

440KG+ WOODVIEW WAGYU CARCASS FED 400 DAYS. DEBONED AND PACKAGED FOR YOUR PLEASURE!

SPECIES: WAGYU MALE: 1 TOTAL: 1

Breeder Name Woodview
Charity Lot
Sex M

A hand selected Wagyu ox, fed 400 days at Sparta. Deboned, vacuum packed and delivered to your home.



PURCHASER

PRICE



LOT 2

BLACK FULLBLOOD FEMALE

SPECIES: WAGYU FEMALE: 1 TOTAL: 1

Breeder Name Woodview
Wagyu No WOODVIEW BA15-366
Identification 5000003425
Sex BA150366
Date of birth F
Colour 27-Apr-15
DNA No Black
Grade 281794
Blood Fullblood
1

'n Pragtige jong vers van 'n embryo spoeling met uitgesoekte genetica. Saad van haar stoetvaar TF Itomichi 1/2 is onlangs verkoop @ R10 000.00 per strooitjie op die "Uit die Fles" -veiling in Stellenbosch. Haar moeder BA07-123 is lyn geteel met Kitateruyasudo J2810 (ETJ 003) en het al reeds 8 kalwers, en is tans weer in 'n embryo spoel program. Sy is oop en staan by die Winburg Embryo Sentum

PURCHASER

PRICE



GENETICS

— PEDFA500 ITOMICHI J1158

— **Sire:** IMUFP0036 TF ITOMICHI{1/2}

— DAI2 DAI2 KINTOU J337756

Animal: BA150366 WOODVIEW BA15-366

— IMJFAJ2810 KITATERUYASUDO J2810 HONGEN

— **Dam:** BA070123 WOODVIEW SAVANNA NIGHTS 7 123

— BA010039 WOODVIEW MEGAN 4TH



LOT 3

AKAUSHI (RED) FULLBLOOD FEMALE

SPECIES: WAGYU FEMALE: 1 TOTAL: 1

Breeder Name Xhariep Wagyu
Wagyu No MILAH WB 17-010
Identification 5000034917
Sex WB170010
Date of birth F
Colour 16-Mar-17
DNA No Red
Grade C17-10325
Blood Fullblood
1

Embryo calf of the world renowned Heart Brand red Emperor, son of Big AI 502
On mother side Bald Ridge Akari - exceptional growth with carcass weight of 50kg above the breed.. Carcass index of 70\$ above the breed average.



GENETICS

— AL502 HB BIG AL 502

— **Sire:** HBCFV2139 HEART BRAND RED EMPEROR (USA)

— J19461 DAI 8 MARUNAMI J19461

Animal: WB170010 MILAH WB 17-010

— KALFC0402 KALANGA RED STAR C402

— **Dam:** CCCFH0018 BALD RIDGE AKARI (AI) (ET)

— KALFC767 KALANGA F C767 (AI) (ET)

PURCHASER

PRICE



LOT 4

BLACK FULLBLOOD FEMALE

SPECIES: WAGYU FEMALE: 1 TOTAL: 1

Breeder Name Woodview
Wagyu No KIRSTEINS PK 150007
Identification 5000008184
Sex PK150007
Date of birth F
Colour 16-Sep-15
DNA No Black
Grade 298757
Blood Fullblood
1

Bloubloed telling, 'n uitstekende aanbod. Sy kombineer die bloed van 4 van die oorspronklike bulle uit Japan ingevoer. Michifuku (marmering en oogspeer), Itozuzudo TF151 (groeï, melk, marmering en marmering fynheid), Hirashigetayasu J2351 (ETJ001) (grootte, groeï en melk) en Itoshigenami TF148 (marmering & fynheid). Sy verkoop met 'n bul-kalf BA17-110 en staan tans by Invitro Africa in Parys. Al haar toetse is gedoen en sy kan gespoel word! Sy verkoop saam met 3 strooitjies Itoshigenami TF148 saad.

PURCHASER

PRICE



GENETICS

— IMUFM1615 WORLD K'S MICHIFUKU 1615

— **Sire:** KJDFC0086 LAKE WAGYU C086

— KJDFY0038 LAKE WAGYU

Animal: PK150007 KIRSTEINS PK 150007

— WESFA0107 WESTHOLME HIRASHIGETAMANA

— **Dam:** PK110001 KIRSTEINS BLITSIE

— KJDFC0055 LAKE WAGYU C055



LOT 5
BLACK FULLBLOOD FEMALE

SPECIES: WAGYU FEMALE: 1 TOTAL: 1
Breeder Name Xhariep Wagyu
Wagyu No MILAH 16-0002
Identification 5000021989
Sex WB160002
Date of birth F
Colour 30-Jul-16
DNA No Black
Grade C16-12925
Blood Fullblood
 1

This black female is a MUST for any potential buyer who is serious about improving his herd. This embryo calf has got the very well known sire (ITOMORITAKA J2703 HONGEN) grandson of DAI7 Itosakura, the most famous bull of the Shimane prefecture dominating pedigrees in Japan. This bull brings frame, growth and maternal traits to the table. On mother side she brings what Wagyu is about. Marbling, marbling and more marbling... ESF MICHI T 614-050 - this donor mom has got unmatched sire stack for marbling. Her sire MICHIFUKU was the former nr 1 bull in the USA for marbling and her maternal grandsire JVP FUKUTSURU 068 is currently nr 1 marbling sire in the USA. What more do you want... dont miss this unique female.

PURCHASER _____
 PRICE _____



— J1555 ITOHIRASHIGE J1555
Sire: ETJ002 ITOMORITAKA J2703 HONGEN (JAP)
 — J565554 DAI 6 OEFUJII J565554 KURO KOH
Animal: WB160002 MILAH 16-0002
 — IMUFM1615 WORLD K'S MICHIFUKU 1615
Dam: FB6831 ESF MICHI T-614-050
 — FB5074 BR MS FUKUTSURU 0614



LOT 6
BLACK FULLBLOOD FEMALE

SPECIES: WAGYU FEMALE: 1 TOTAL: 1
Breeder Name Absolute Wagyu
Wagyu No BEN TSON KI 140016
Identification 82207556
Sex KI140016
Date of birth F
Colour 18-Jun-14
DNA No Black
Grade 255520
Blood Fullblood
 1

This Heifer has one of the best marbling Pedigrees in South Africa at the moment. Her Sire - our top stud bull (BenTson) combines Michifuku 1615 ; Itoshigefuji TF147 and Itoshigenami TF148 in one pedigree.

PURCHASER _____
 PRICE _____



— IMUFM1615 WORLD K'S MICHIFUKU 1615
Sire: OVE080002 OAK VALLEY KITATERA
 — BYWFZ0075 BLACKMORE HIKOHIME Z075
Animal: KI140016 BEN TSON KI 140016
 — IMJFAJ2810 KITATERUYASUDOI J2810 HONGEN
Dam: BA080212 WOODVIEW BA 080212
 — BA010039 WOODVIEW MEGAN 4TH



LOT 7
AKAUSHI (RED) FULLBLOOD FEMALE

SPECIES: WAGYU FEMALE: 1 TOTAL: 1
Breeder Name AL5 Wagyu
Wagyu No AL 5 ARTIGAS L005 (ET) (AUS)
Identification 5000020676
Sex AL160005
Date of birth F
Colour 09-Mar-16
DNA No Red
Grade 324115
Blood Fullblood
 1

Artigas is a chance in a lifetime. Of the very few Mazda Wagyu Genetics available in South Africa. Sired by Ashwoodpark Virile, this Mekata Heifer gives you the ultimate edge when you want to optimise or expand your Akaushi investment. This heifer can be placed in a combined In-Vitro program with the owner in February 2017. Ai'd by TWA Kotsukari, and run by AI5L0019, and AI5 L002 .

Artigas is 'n kans van 'n leeftyd. Hierdie embryo-vers se embrio kom vanaf Mazda Wagyu in Australia. Robert Reed was baie kieskeurig aan wie hy embryos verskaf het, sodoende is die genetika van veral Ashwood Park Verile bitter skaars. Wat die vers besonder maak is dat sy kunsmatig geïnsimineer is met TWA Kotsukari. Metaka en Hikari kom ook voor in die bloedlyn van die besondere vers.

PURCHASER _____
 PRICE _____



— IMUFQ0502 HB BIG AL Q502 FB2998
Sire: TFWFW0629 ASHWOOD F X010 (AI) (ET)
 — TWAFS0341 TWA MEKATA (AI) (ET)
Animal: AL160005 AL 5 ARTIGAS L005 (ET) (AUS)
 — JTHFT0070 EMPRESS KENICHI (AI) (ET)
Dam: KSOFH0052 MAZDA WAGYU ARTIGAS
 — RWAFS0053 RWA HOMARE BLUE 53 (IMP USA) (AI) (ET)



LOT 8
AKAUSHI (RED) F1 FEMALE

SPECIES: WAGYU FEMALE: 1 TOTAL: 1
Breeder Name AL5 Wagyu
Wagyu No AL5XK0011
Sex F
Date of birth 07-Aug-15
Colour Red
DNA No 312966
Grade F1
Blood 0.5

First Cross with Senepol in SA. This chance to get into Akaushi. This pregnant F1, who had a Senepol dam gives you the chance to be at the forefront of Akaushi in South Africa.

Sekerlik een van die mooiste verse op die veiling. Hierdie is 'n bewys van die groei en bouvorm waarna gestreef kan word. Met die gebruik van Akaushi (Rooi Wagyu) bulle, gaan hierdie belegging in die dragtige rooi vers jou vinnige opbrengs lewer.

PURCHASER _____
 PRICE _____



— IMUFQ0502 HB BIG AL Q502 FB2998
Sire: HS FX0010 ASHWOOD F X010 (AI) (ET)
 — TWAFS0341 TWA MEKATA (AI) (ET)
Animal: AL5XK0011
Dam: Senepol



LOT 9 AKAUSHI (RED) FULLBLOOD MALE

SPECIES: WAGYU MALE: 1 TOTAL: 1

Breeder Name Xhariep Wagyu
Wagyu No MILAH WB 17-008
Identification 5000035021
Sex WB170008
Date of birth M
Colour 15-Mar-17
DNA No Red
Grade C17-10337
Blood Fullblood
 1

This male embryo calf shows very good male traits from a young age, with such a well known sire (red emperor hbcf 2139) what do you expect. Most Wagyu breeders see his grandmother on fathers side (DAI 8 marunami j19461) as possibly the best dam the breed has seen. On mother side (KALANGA F C708) you sit with rump fat, rib fat, growth and mature weight above the breed!! This great male red Wagyu will add lots of value to any cattle breed as well as to your full blood stud.

PURCHASER
 PRICE



GENETICS

— AL502 HB BIG AL 502

— **Sire:** HBCFV2139 HEART BRAND RED EMPEROR (USA)

— J19461 DAI 8 MARUNAMI J19461

Animal: WB170008 MILAH WB 17-008

— HBCFV2141 HEART BRAND RED STAR

— **Dam:** KALFC0708 KALANGA F C708 (AI) (ET)

— KALFU0036 KALANGA HIKAHOMARE VW36



LOT 10 BLACK FULLBLOOD MALE

SPECIES: WAGYU MALE: 1 TOTAL: 1

Breeder Name Woodview
Wagyu No CARLOO JMP15-323W
Identification 5000023795
Sex JMP150323
Date of birth M
Colour 26-May-15
DNA No Black
Grade 344023
Blood Fullblood
 1

Hierdie is 'n uitstaande Wagyu bul met nuwe genetika in Suid Afrika. Hy is veelsuidig en kan by 'n stoet of komersiele F1 kudde gebruik word. Gebruik hierdie bul om nageslag met hoe marmering te produseer.

PURCHASER
 PRICE



GENETICS

— IMUFQ2599 TF YUKIHARUNAMI 4

— **Sire:** MOYFF0054 MOYHU F054

— MOYFB0430 MOYHU 430

Animal: JMP150323 CARLOO JMP15-323W

— BIMFC0001 BIMBI MICHİYANA (AI) (ET)

— **Dam:** KSOFH0053 OASIS SENAKA

— KJDFE0004 LAKE WAGYU E4



LOT 11 BLACK FULLBLOOD MALE

SPECIES: WAGYU MALE: 1 TOTAL: 1

Breeder Name Delta Wagyu South Africa
Wagyu No HESSI HJ 150008
Identification 5000008036
Sex HJ150008
Date of birth M
Colour 22-Jul-16
DNA No Black
Grade 284445
Blood Fullblood
 1

Starter Pack:
 This very well balanced "Starter Pack Bull" has Hirashigeteyasu ETJ001 for growth and Kitateriyasudoj ETJ003 for marbling on his sire side. On his dam side he has Michifuku (marbling and ribeye) and Itozurodoi TF 151 (growth, milk and marbling fineness).



GENETICS

— IMJFAJ2351 HIRASHIGETAYASU J2351 HONGEN

— **Sire:** WESFZ0278 WESTHOLME HIRASHIGETAYASU Z278

— WESFX0106 WESTHOLME OHYURIHIME

Animal: HJ150008 HESSI HJ 150008

— IMUFLTF151 ITOZURUDOJ TF151

— **Dam:** KJDFD0030 LAKE WAGYU D030

— CAMFU0303 CAMPANELLA ITO MICHİ (ET)



20 X BLACK F1 HEIFERS (OPEN)

SPECIES: WAGYU FEMALE: 1 TOTAL: 1

Breeder Name Delta Wagyu South Africa
Identification Glen Walton 1
Sex F
Colour Black
Grade F1
Blood 0.5

Heifers: 20 registered F1's out of a diverse mix of genetics ideally suited to start building a purebred herd on. The heifers average weight will vary between 280-320kg at 12 months of age which in our opinion is an indication of the quality of these animals. Showing early maturity they will be ready for mating as yearlings by the end of the year, to calve down at 24 months of age.

We will be inseminating their sisters and half-sisters in November.

PURCHASER
 PRICE





LOT 12
BLACK FULLBLOOD FEMALE

SPECIES: WAGYU FEMALE: 1 TOTAL: 1

Breeder Name Betmar Wagyu
Wagyu No BETMAR BET170011
Identification 5000035930
Sex F
Date of birth BET170011
Colour Black
DNA No 383344
Grade Fullblood
Blood 1

Her sire, the well-known Ben'tson, combines the excellent marbling qualities of Michifuku 1615 (B3F, CHSF, CL16F, F11F, F13F) with a dam from a combination of TF147 (growth and milk) and TF148 (marbling and fineness). Her dam, a Michifuku 1615 daughter, is Betmar Wagyu's top performer in In Vivo (average 10 embryos per flush) as well as In Vitro (average 4 embryos per aspiration). BA090321's sire and dam are free from recessive genes. Selected line breeding in the Michifuku 1615 line with high embryo production potential; top genetics for top breeding.

PURCHASER
PRICE



BETMAR WAGYU GENETICS

- IMUFM1615 WORLD K'S MICHIFUKU 1615
- **Sire:** OVE080002 OAK VALLEY KITATERA OVE080002
- BYWFZ0075 BLACKMORE HIKOHIME Z075
- Animal:** BET170011 BETMAR BET170011
- IMUFM1615 WORLD K'S MICHIFUKU 1615
- **Dam:** BA090321 WOODVIEW LAKE WAGYU C69 321
- KJDFC0069 (Aus) LAKE WAGYU C69 (AI) (ET)



LOT 14
BLACK FULLBLOOD FEMALE

SPECIES: WAGYU FEMALE: 1 TOTAL: 1

Breeder Name Oliveburgh Wagyu
Wagyu No OLIVEBURGH OB1605
Identification 5000014240
Sex F
Date of birth OB160005
Colour Black
DNA No 348507
Grade Fullblood
Blood 1

Genetics which combines 4 of the world's most prominent bloodlines in one pedigree. This heifer is an embryo calf born from BA 80201 (Avg. selling price of BA 80201 progeny over the past two years was >R200 000 per bull or heifer). The bloodline of this Fullblood heifer truly combines marbling, size, growth and milk in one genetic pool. With Michifuku 1615 (marbling) and Kitateruyasudo J2810 (size, growth + milk) on the Bull side. Hirashigetayasu J2351 (enhanced marbling without compromising on size, milk, and growth) and World K's Takazakura (larger frame), introduced by the Dam. Exceptional fertility is also proved by the direct Dam, BA 80201 (Avg. of over 8 Embryo's in the previous 8 In Vivo Flushes, with the highest being 18 in one flush!). Ideal young Fullblood female to build a herd with. Sells open and in top condition to follow into an Embryo flushing program in 2017/2018.



OLIVEBURGH WAGYU GENETICS

- WESFX0179 WESTHOLME TERUAKITSUKI
- **Sire:** KKWFA0871 KURO KIN TERUAKITSUKI
- KKWFW0784 KURO KIN KENSEI 7
- Animal:** OB160005 OLIVEBURGH OB1605
- IMJFAJ2351 HIRASHIGETAYASU J2351 HONGEN
- **Dam:** BA080201 WOODVIEW TIENKIE 2ND
- BA040044 WOODVIEW 04 44
- PURCHASER
- PRICE



LOT 13
AKAUSHI (RED) FULLBLOOD FEMALE

SPECIES: WAGYU FEMALE: 1 TOTAL: 1

Breeder Name Xhariep Wagyu
Wagyu No MILAH WB 17-009
Identification 5000035039
Sex F
Date of birth WB170009
Colour Red
DNA No C17-10338
Grade Fullblood
Blood 1

Another daughter to Heart Brand red Emperor. Bald Ridge Akari again the mother of this beautiful red Wagyu embryo dam - she has got capacity and great growth trades above the breed for all parameters including mature weight.



XHARIEP GENETICS

PURCHASER
PRICE

- AL502 HB BIG AL 502
- **Sire:** HBCFV2139 HEART BRAND RED EMPEROR (USA)
- J19461 DAI 8 MARUNAMI J19461
- Animal:** WB170009 MILAH WB 17-009
- KALFC0402 KALANGA RED STAR C402
- **Dam:** CCCFH0018 BALD RIDGE AKARI (AI) (ET)
- KALFC767 KALANGA F C767 (AI) (ET)



LOT 15
BLACK FULLBLOOD FEMALE

SPECIES: WAGYU FEMALE: 1 TOTAL: 1

Breeder Name AL5 Wagyu
Wagyu No AL5 Koko (Aus) (ET) M005
Sex F
Date of birth 06-Jan-17
Colour Black
Grade Fullblood
Blood 1

The first progeny from Ginjo Marblemax B901 available in South Africa. Combined with a legendary Longford Dam. This offer will be difficult to repeat, for 2 embryo-calves have been born out of this combination and AL5 is keeping the other.

Hierdie Dom Bayard embrio was nog nooit in Suid Afrika beskikbaar nie. MarbleMax B901 gee bo-gemiddelde speengewigte, verbeterde 200-400dae groei, verminderde byvoeding. Hierdie kombinasie is bymekaar gevoeg om winsgewindheid van 'n volbloedkudde te maksimeer.



AL 5 Wagyu GENETICS

- IMJFAJ2351 HIRASHIGETAYASU J2351 HONGEN (IMP J)
- **Sire:** Y342 GINJO MARBLEMAX HIRANAMI B901 (AI) (ET)
- GINFZ0158 GINJO F Z158
- Animal:** AL5 Koko (Aus) (ET) M005
- LDFB8720 LONGFORD B8720 (AI) (ET)
- **Dam:** BA090285 LONGFORD F F0313
- LDFB8560 LONGFORD B8560

PURCHASER
PRICE



LOT 16
BLACK FULLBLOOD FEMALE

SPECIES: WAGYU FEMALE: 1 TOTAL: 1

Breeder Name Woodview
Wagyu No KIRSTEINS PK 150009
Identification 5000008200
Sex PK150009
Date of birth F
Colour 22-Sep-15
DNA No Black
Grade 298759
Blood Fullblood
1

Bloudbloed telling, 'n uitstekende aanbod. Sy kombineer die bloed van 4 van die oorspronklike bulle uit Japan ingevoer. Michifuku (marmering en ribeye), Itozuzudo TF151 (groeï, melk, marmering en marmering fynheid), Hirashigetayasu J2351 (grootte, groei en melk) en Itoshigenami TF148 (marmering & fynheid). Sy verkoop met 'n bul-kalf BA17-111 en staan by Invitro Africa in Parys. Al haar toetse is gedoen en sy kan gespoel word! Sy verkoop saam met 3 strooitjies Kitateruyasudoï J2810 (ETJ003) saad wat die regte saad is om op haar te gebruik.

PURCHASER
PRICE



GENETICS

IMUFM1615 WORLD K'S MICHIFUKU 1615

Sire: KJDFC0086 LAKE WAGYU C086

KJDFY0038 LAKE WAGYU

Animal: PK150009 KIRSTEINS PK 150009

WESFA0107 WESTHOLME HIRASHIGETAMANA

Dam: PK110001 KIRSTEINS BLITSIE

KJDFC0055 LAKE WAGYU C055



LOT 18
BLACK FULLBLOOD MALE

SPECIES: WAGYU MALE: 1 TOTAL: 1

Breeder Name Kobe Stud Breeding
Wagyu No KOBE ITOMICHIDOI
Identification 81703068
Sex KR140016
Date of birth M
Colour 07-Sep-14
DNA No Black
Grade 0000256025
Blood Fullblood
1

Itomichidoi KR1416: Is sired by Lake Wagyu C087 who's sire is Michifuku (FBTI: \$280) the long-time number 1 bull on marbling. On his dam side, a daughter of Itozurudoï TF151 (FBTI: \$191) from Takeda farms who produce large well balance calves with good marbling and good milk production. Itomichidoi's dam is sired by the well-known Itoshigenami TF148 (FBTI: \$434). He was rated 8th best bull on marbling in Australia according to the breeding guide of 2015.

PURCHASER
PRICE



GENETICS

IMUFM1615 WORLD K'S MICHIFUKU 1615

Sire: KJDFC0087 LAKE WAGYU C087

KJDFY0034 LAKE WAGYU Y034 (AI)

Animal: KR140016 KOBE ITOMICHIDOI

H90 ITOSHIGENAMI

Dam: KSOFF0027 OASIS MORIYAMAF027

BYWFS0084 YADNARIE MORIYAMA



LOT 17
AKAUSHI (RED) FULLBLOOD FEMALE

SPECIES: WAGYU FEMALE: 1 TOTAL: 1

Breeder Name Xhariëp Wagyu
Wagyu No MILAH WB 17-007
Identification 5000035013
Sex WB170007
Date of birth F
Colour 16-Mar-17
DNA No Red
Grade C17-10336
Blood Fullblood
1

This female embryo calf shows potential for great capacity and carcass size and growth with exceptional female traits. Her dad Redstar c402 brings great carcass, growth for 200, 400 and 600 days coupled with great male traits ie capacity, scrotum and strong male attributes.. Just have a look at his picture!! On mother's side you sit with a grandma (kalanga hikakiko qw09) with fantastic rib, rump fat, marbling and a carcass index of 160\$.

PURCHASER
PRICE



GENETICS

HBCFV2141 HEART BRAND RED STAR

Sire: KALFC0402 KALANGA RED STAR C402

KALFU0036 KALANGA HIKAHOMARE VW36

Animal: WB170007 MILAH WB 17-007

IMUFN2125 TAMAMARU (USA)

Dam: KALFB0004 KALANGA TAMAKIKO B004 (AI)

KALFV0009 KALANGA HIKAKIKO QW09



LOT 19
BLACK FULLBLOOD MALE

SPECIES: WAGYU MALE: 1 TOTAL: 1

Breeder Name Delta Wagyu South Africa
Wagyu No HESSI HJ 150005
Identification 5000008002
Sex HJ150005
Date of birth M
Colour 12-Jan-15
DNA No Black
Grade 284442
Blood Fullblood
1

This bull is packed with marbling through Lake Wagyu C87 (Michifuku) and Kitateruyasudoï (ETJ003). If you want to start breeding Wagyu out of commercial cows, this is another perfect bull to use as a foundation sire as well as for F1 production.

PURCHASER
PRICE



GENETICS

WKSFM0164 WORLD K'S MICHIFUKU 1615

Sire: KJDFC0087 LAKE WAGYU C087

KJDFY0034 LAKE WAGYU Y034 (AI)

Animal: HJ150005 HESSI HJ 150005

WESFA0107 WESTHOLME HIRASHIGETAMANA

Dam: BA110586 WOODVIEW INSURANCE 11 586

KJDFC0058 LAKE WAGYU C058



LOT 20 5 X BLACK F1 FEMALE

SPECIES: WAGYU FEMALE: 1 TOTAL: 1

Breeder Name AL5 Wagyu
Name AL5XL0134
Sex F
Date of birth 24-Mar-16
Colour Black
DNA No 324152
Grade F1
Blood 0.5

This Starter package of pregnant F1 heifers, was Ai'd with imported semen, Goorambat Terutani F 146, and run by L0019 an L0002. This progeny will certainly be exeptional F2's, where the carcass quality is expected to be exceptional, and the heifer will have optimum breeding potential.

Hierdie beginnerspakkie van dragtige F1 verse geinsimineer met ingevoerde saad van die besondere Goorambat Terutani T146, gaan ossies lewer wat wereldkampioen-biefstuk kompetesies kan wen. Asook verse waar jy opsies het om in enige teelprogram te kan gebruik.

PURCHASER
PRICE



FB2501 WORLD K'S SANJIROU (FB2501)

Sire: FB8092 BPF MR SAN 4 (FB8092)

FB6032 SUZUTAKA 2 (FB6032)

Animal: AL5XL0134

Dam: Base Cow



LOT 21 BLACK FULLBLOOD FEMALE

SPECIES: WAGYU FEMALE: 1 TOTAL: 1

Breeder Name Winterberg Wagyu
Name Winterberg 607
Wagyu No 5000038645
Identification WF160607
Sex F
Date of birth 24-Sep-16
Colour Black
DNA No C17-13358
Grade Fullblood
Blood 1

This heifer is the result of imported genetics from Australia. She has a superb pedigree from both the Dam and Sire. Genetics include Michifuku, Takazakura and Suzutani features.

PURCHASER
PRICE



IMUFM1615 WORLD K'S MICHIFUKU 1615

Sire: KJDFC0087 LAKE WAGYU C087

KJDFY0034 LAKE WAGYU Y034 (AI)

Animal: WF160607 Winterberg 607

MOYFZ0179 MOYHU TANI

Dam: MOYFH0079 MOYHU F H79

MOYFB0354 MOYHU F B0354



LOT 22 BLACK FULLBLOOD FEMALE

SPECIES: WAGYU FEMALE: 1 TOTAL: 1

Breeder Name Woodview
Name WOODVIEW BA130808
Wagyu No 78488970
Identification BA130808
Sex F
Date of birth 28-Aug-13
Colour Black
DNA No 312576
Grade Purebred

BA13-808 is een van die top koeie in die Woodview kudde. Haar stoetvaar Future Investment het homself reeds bewys in die Suid Afrikaanse Wagyu kudde. Hy is 'n seun van Itoshigenami TF148. En het al reeds 151 geregistreerde nageslag. Aan haar moeders kant kombineer sy twee van die oorspronklike Japanese legends TF147 & ETJ 003. 'n Top koei. Sy is ge-KI met Kitateruyasudoi J2810 (ETJ003) en sy het saam met die bulle BA13-923 & BA09-330 geloop. Sy is swaar dragtig.

PURCHASER
PRICE



IMUFQTF148 ITOSHIGENAMI TF148

Sire: BA090335 WOODVIEW FUTURE INVESTMENT

KJDFB0050 LAKE WAGYU B050

Animal: BA130808 WOODVIEW BA130808

Y342 BLACMORE HIKOSHIGEFUJI Y342

Dam: BA110461 WOODVIEW MILESTONE 11 461

BA090308 WOODVIEW PERFECT



LOT 23 BLACK FULLBLOOD FEMALE

SPECIES: WAGYU FEMALE: 1 TOTAL: 1

Breeder Name Woodview
Name WOODVIEW THYME 2
Wagyu No 5000000009
Identification BA140184
Sex F
Date of birth 07-Oct-14
Colour Black
DNA No 262812
Grade Fullblood
Blood 1

'n Merkwaaardige jong koei met haar lewe voor haar. Sy kombineer die ingevoerde Japanese stoetvaars Hirashigetajasu J2351 (ETJ001), TF147 en Michifuku bloedlyne. Sy het 'n pragtige verskalf gehad in 2016. Sy verkoop met 'n vers kalf BA17-237.

PURCHASER
PRICE



BA030043 WOODVIEW 03 43

Sire: BA110515 WOODVIEW TRANSPORT 11-515

BA080162 WOODVIEW MEGAN 5TH

Animal: BA140184 WOODVIEW THYME 2

BA090328 WOODVIEW RELIABLE TF 147

Dam: BA120721 WOODVIEW TYME

BA090325 WOODVIEW LAKE WAGYU C72 325



LOT 24 BLACK FULLBLOOD FEMALE

SPECIES: WAGYU FEMALE: 1 TOTAL: 1

Breeder Name AL5 Wagyu
Wagyu No AL 5 MORIYAMA L001 (ET) Aus)
Identification 5000020627
AL160001
Sex F
Date of birth 17-Nov-16
Colour Black
DNA No 324113
Grade Fullblood
Blood 1

Looking for genetics with growth and marbling, this is your chance. This rare combination give you the ideal opportunity to bring in either growth into the maternal line or marbling if you are looking to increase marbling. The Maternal line has got TF 151 which will most defenately increase rib-eye size.

Besonder raar, en word verkoop omdat AI5 twee soortgelyke verse het. Ons kyk hier na 'n besondere keuse van marmeerling gekombineer met groei en melk. Jy kan nie verkeerd gaan indien jy hierdie vers in jou kudde inbring nie.

PURCHASER
 PRICE



IMUFQ2599 TF YUKIHARUNAMI 4 (IMP USA)
Sire: MOYFF0054 MOYHU F054 (AI)
 MOYFB0430 MOYHU 430 (AI) (ET)
Animal: AL160001 AL 5 MORIYAMA L001 (ET) Aus)
 IMUFLTF151 ITOZURUDOI TF151 (IMP USA)
Dam: KSOFH0045 OASIS MORIYAMA H045 (AI) (ET)
 KSOFF0024 OASIS MORIYAMA F024 (AI) (ET)



LOT 26 AKAUSHI (RED) FULLBLOOD FEMALE

SPECIES: WAGYU FEMALE: 1 TOTAL: 1

Breeder Name Xhariep Wagyu
Wagyu No MILAH WB 17-004
Identification 5000034982
WB170004
Sex F
Date of birth 19-Mar-17
Colour Red
DNA No C17-10333
Grade Fullblood
Blood 1

This female animal is exactly what you need at this stage in your herd. What can we say more about her sire... a legend in his own right... he brings milk, growth and carcass size to your heard... The mother bred from a brilliant cow (KALANGA F C767) brings milk, fantastic growth, marbling and adult weight better than the breed. On top of everything the grandma offers a carcass index of 203\$ Buy me and you will see.

PURCHASER
 PRICE



AL502 HB BIG AL 502
Sire: HBCFV2139 HEART BRAND RED EMPEROR (USA)
 J19461 DAI 8 MARUNAMI J19461
Animal: WB170004 MILAH WB 17-004
 KALFC0402 KALANGA RED STAR C402
Dam: CCCFH0018 BALD RIDGE AKARI (AI) (ET)
 KALFC767 KALANGA F C767 (AI) (ET)



LOT 25 BLACK FULLBLOOD FEMALE

SPECIES: WAGYU FEMALE: 1 TOTAL: 1

Breeder Name Winterberg Wagyu
Wagyu No Winterberg 604
Identification 5000038652
WF160604
Sex F
Date of birth 18-Sep-16
Colour Black
DNA No C17-13360
Grade Fullblood
Blood 1

This heifer is the result of imported genetics from Australia. She comes from a strong maternal line on her Dam's side via IMUFLTF151 ITOZURUDOI TF151 (IMP USA) and TWAFR0007 TWA SHIKIKAN (IMP USA) (ET) Bloodlines, Her sire is out of the world famous Michifuku 1615. She features, Takazakura, Itozurudo and Michifuku.

PURCHASER
 PRICE



IMUFM1615 WORLD K'S MICHIFUKU 1615
Sire: KJDFC0087 LAKE WAGYU C087
 KJDFY0034 LAKE WAGYU Y034 (AI)
Animal: WF160604 Winterberg 604
 TWAFR0007 TWA SHIKIKAN (IMP USA) (ET)
Dam: MOYFH0037 MOYHU F H37
 MOYFA0238 MOYHU F A0238



LOT 27 BLACK FULLBLOOD MALE

SPECIES: WAGYU MALE: 1 TOTAL: 1

Breeder Name AL5 Wagyu
Wagyu No Woodview BA 130986
Identification 81655607
BA130986
Sex M
Date of birth 05-Dec-13
Colour Black
DNA No 2617701
Grade Fullblood
Blood 1

Probably the best F1 calf producing bul in South Africa. You cannot go wrong by combining the legendary size and milk of TF147 with Blackmore marbling genetics. - Probably the bull that had the most influence on profitability in Australia.

Hy word beskikbaar gestel nadat hy beproef is, en AI5 genoeg saad terughou. Heelwaarskynlik die beste bul in SA om F1 kallers mee te teel. Hy het besonder geprester by AI5, asook by Delta Wagyu in SA. Sy vaar Itosjigefuji TF147 word beskou as die bul wat die meeste invloed gehad het op winsgewindheid van die Australiese Wagyu bedryf.

PURCHASER
 PRICE



J483 ITOFUJI J483 KURO IKU
Sire: IMUFQTF147 ITOSHIGEFUJI 147
 J920752 DIA 30 NOBORU J920752
Animal: BA130986 Woodview BA 130986
 BYWYF0398 BLACKMORE AIZATZURUDOI Y398
Dam: BA100443 WOODVIEW MISSY
 BA010039 WOODVIEW MEGAN 4TH



LOT 28 BLACK FULLBLOOD MALE

SPECIES: WAGYU MALE: 1 TOTAL: 1

Breeder Name Kobe Stud Breeding
Wagyu No KOBE KR 140006
Identification 81703043
Sex KR140006
Date of birth M
Colour 20-Feb-14
DNA No Black
Grade 0000256016
Blood Fullblood
 1

Sired by Itoshigefuji TF147. He was an extremely large bull who according to some web info weight up to 1 197kg. According to his ebv's it proves that his growth in all aspects are far above breed average and his milk production. On KR1406 dam side, a daughter of Itozurudoi TF151 (FBT: \$191) from Takeda farms who produce large well balance calves with good marbling and good milk production. His dam dam is sired by World K's Michifuku. This bull is a registered AI bull.

PURCHASER
 PRICE



- └ J483 ITOFUJI J483 KURO IKU
- └ **Sire:** IMUQTF147 ITOSHIGEFUJI 147
- └ J920752 DIA 30 NOBORU J920752
- Animal:** KR140006 KOBE KR 140006
- └ IMUFLTF151 ITOZURUDOI TF151
- └ **Dam:** KSOFE0019 OASIS ITO MICHI E019
- └ CAMFU0303 CAMPANELLA ITO MICHI (ET)



LOT 29 AKAUSHI (RED) FULLBLOOD MALE

SPECIES: WAGYU MALE: 1 TOTAL: 1

Breeder Name Xhariep Wagyu
Wagyu No MILAH WB 17-005
Identification 5000034990
Sex WB170005
Date of birth M
Colour 19-Mar-17
DNA No Red
Grade C17-10334
Blood Fullblood
 1

To put it short and sweet this male animal is a must buy- with the world renowned combination of HEART BRAND RED EMPEROR and KALANGA F767, BALD RIDGE AKARI on mother side, what more can we say. This male shows good male traits of HEART BRAND RED EMPEROR at a very young age.. coupled with great growth, adult weight and an astounding 203\$ (70\$ above the breed) carcass index - you should not miss these genetics and what it can bring to your herd.

PURCHASER
 PRICE



- └ AL502 HB BIG AL 502
- └ **Sire:** HBCFV2139 HEART BRAND RED EMPEROR (USA)
- └ J19461 DAI 8 MARUNAMI J19461
- Animal:** WB170005 MILAH WB 17-005
- └ KALFC0402 KALANGA RED STAR C402
- └ **Dam:** CCCFH0018 BALD RIDGE AKARI (AI) (ET)
- └ KALFC767 KALANGA F C767 (AI) (ET)



LOT 30 BLACK FULLBLOOD MALE

SPECIES: WAGYU MALE: 1 TOTAL: 1

Breeder Name Delta Wagyu South Africa
Wagyu No GLEN WALTON L0001
Identification 5000012988
Sex GWW150001
Date of birth M
Colour 26-Sep-15
DNA No Black
Grade 338748
Blood Fullblood
 1

Starter Pack:
 Glen Walton L0001 is a bull with strong growth on the sire side in Itomoritaka (ETJ 002) and a lot of marbling combined with size on the dam side in Itoshigenami TF 148.



- └ J1555 ITOHIRASHIGE J1555
- └ **Sire:** ETJ002 ITOMORITAKA J2703 HONGEN (JAP)
- └ J565554 DAI 6 OEFUJII J565554 KURO KOH
- Animal:** GWW150001 GLEN WALTON L0001
- └ IMUFQTF148 ITOSHIGENAMI TF148
- └ **Dam:** BA130820 WOODVIEW BA 130820



20 X BLACK F1 HEIFERS (OPEN)

SPECIES: WAGYU FEMALE: 1 TOTAL: 1

Breeder Name Delta Wagyu South Africa
Identification Glen Walton 21
Sex Glen Walton 21
Colour F
Grade Black
Blood F1
 0.5

Heifers: 20 registered F1's out of a diverse mix of genetics ideally suited to start building a purebred herd on. The heifers average weight will vary between 280-320kg at 12 months of age which in our opinion is an indication of the quality of these animals. Showing early maturity they will be ready for mating as yearlings by the end of the year, to calve down at 24 months of age. We will be inseminating their sisters and half-sisters in November.



PURCHASER
 PRICE



LOT 31 BLACK PUREBRED FEMALE

SPECIES: WAGYU FEMALE: 1 TOTAL: 1

Breeder Name Absolute Wagyu
Wagyu No WOODVIEW CLEO
Identification 76229194
Sex BA120775
Date of birth F
Colour 10-Nov-12
DNA No Black
Grade 232998
Blood Purebred

This Purebred heifer combines the legendary Itoshigenami TF148 as the Sire and on the dam side ETJ003 (Kitateruyusudo), Itoshigefuji TF147 and TF Itohana 2.

PURCHASER
 PRICE



└ J10632 SHIGESHIGENAMI J10632

└ **Sire:** IMUFQTF148 ITOSHIGENAMI TF148

└ 85H FUKUYUKI

Animal: BA120775 WOODVIEW CLEO

└ Y342 BLACKMORE HIKOSHIGEFUJI Y342

└ **Dam:** BA100381 WOODVIEW BA 100381

└ BA070179 WOODVIEW ELSLIE RED SUN 7 179



LOT 32 AKAUSHI (RED) FULLBLOOD FEMALE

SPECIES: WAGYU FEMALE: 1 TOTAL: 1

Breeder Name Xhariep Wagyu
Wagyu No MILAH WB 17-003
Identification 5000034974
Sex WB170003
Date of birth F
Colour 17-Mar-17
DNA No Red
Grade C17-10332
Blood Fullblood
Blood 1

Another female from the Xhariep red Wagyu herd that will make a huge difference in your herd. This dam shows on mother side very high indexes for rib fat, rump fat, marbling and growth.. She will bring high growth (Kalanga Red Star), milk, marbling and a far above breed carcass index of 160\$ to your heard. Exactly what you want- genetics for good meat and profitability.

PURCHASER
 PRICE



└ AL502 HB BIG AL 502

└ **Sire:** HBCFV2139 HEART BRAND RED EMPEROR (USA)

└ J19461 DAI 8 MARUNAMI J19461

Animal: WB170003 MILAH WB 17-003

└ HBCFV2141 HEART BRAND RED STAR

└ **Dam:** KALFC0708 KALANGA F C708 (AI) (ET)

└ KALFU0036 KALANGA HIKAHOMARE VW36



LOT 33 BLACK FULLBLOOD FEMALE

SPECIES: WAGYU FEMALE: 1 TOTAL: 1

Breeder Name Woodview
Wagyu No WOODVIEW BA15-384
Identification 500003607
Sex BA150384
Date of birth F
Colour 31-Jul-15
DNA No Black
Grade 320809
Blood Fullblood
Blood 1

Hier is 'n spesiale aanbod. Sy is 'n ingevoerde embrio vers. Sy kombineer bloedlyne van die bul Fukutsuru J068 (Hierdie bul was die No 1 marmering stoetvaar in die VSA) en die Terutani bloedlyn wat groei en grootte teel. Sy word tans gespoel by die Winburg Embrio Sentrum. Sy word verkoop vanaf die spoel stasie en staan reg om te spoel.

PURCHASER
 PRICE



└ IMJFMJ068 IMJFMJ068 FUKUTSURU J068

└ **Sire:** TFWFW0629 TAKEDA FARM FUKUTSURU 004

└ TFWFU0177 TAKEDA FARM ITOCHIYO U177 USA

Animal: BA150384 WOODVIEW BA15-384

└ IMUFR3258 TERUTANI

└ **Dam:** KSOFH0052 OASIS CHIYOTAKE

└ GRSFY0086 GOORAMBAT



LOT 34 BLACK FULLBLOOD FEMALE

SPECIES: WAGYU FEMALE: 1 TOTAL: 1

Breeder Name Oliveburgh Wagyu
Wagyu No OLIVEBURGH OB1606
Identification 500014257
Sex OB160006
Date of birth F
Colour 20-Jun-16
DNA No Black
Grade 348508
Blood Fullblood
Blood 1

This heifer is a full sister to Lot 14 (OB 16 0005) of which the genetics combines 4 of the world's most prominent bloodlines in one pedigree. The bloodline of these Fullblood heifers combines marbling, size, growth and milk in one genetic pool. With Michifuku 1615 (marbling) and Kitateruyasudo J2810 (size, growth + milk) on the Bull side. Hirashigetayasu J2351 (enhanced marbling without compromising on size, milk, and growth) and World K's Takazakura (larger frame), introduced by the Dam. Exceptional fertility is also proved by the direct Dam, BA 80201 (Avg. of over 8 Embryo's in the previous 8 In Vivo Flushes, with the highest being 18 in one flush!). Ideal young Fullblood female to build a herd with. Sells open and in top condition to follow into an Embryo flushing program in 2017/2018.

OLIVEBURGH WAGYU PURCHASER
 PRICE

└ WESFX0179 WESTHOLME TERUAKITSUKI

└ **Sire:** KKWFA0871 KURO KIN TERUAKITSUKI

└ KKWFW0784 KURO KIN KENSEI 7

Animal: OB160006 OLIVEBURGH OB1606

└ IMJFAJ2351 HIRASHIGETAYASU J2351 HONGEN

└ **Dam:** BA080201 WOODVIEW TIENKIE 2ND

└ BA040044 WOODVIEW 04 44



LOT 35 BLACK FULLBLOOD FEMALE

SPECIES: WAGYU FEMALE: 1 TOTAL: 1

Breeder Name Betmar Wagyu
Wagyu No BETMAR BET170016
Identification 5000039908
Sex F
Date of birth BET170016
Colour F
DNA No 07-Aug-17
Grade Black
Blood 386020
 Fullblood
 1



Her sire combines good growth and milk from TF147 with Fukutsuru J068 and Kitateruyasudo J2810. Her dam, a Michifuku 1615 daughter, is Betmar Wagyu's to performer in In Vivo (average 10 embryos per flush) as well as In Vitro (average 4 embryos per aspiration). BA090321's sire and dam are free from recessive genes. A heifer with milk, low birth weight, good marbling and embryo production in her genes, the foundation for a top herd.

PURCHASER
 PRICE

- └ IMUFQTF147 ITOSHIGEFUJI 147
- └ **Sire:** BA130986 WOODVIEW BA 130986
- └ BA100443 WOODVIEW MISSY
- Animal:** BET170016 BETMAR BET170016
- └ IMUFM1615 WORLD K'S MICHIFUKU 1615
- └ **Dam:** BA090321 WOODVIEW LAKE WAGYU C69 321
- └ KJDFC0069 (Aus) LAKE WAGYU C69 (AI) (ET)



LOT 37 BLACK PUREBRED FEMALE

SPECIES: WAGYU FEMALE: 1 TOTAL: 1

Breeder Name Woodview
Wagyu No WOODVIEW BA 130949
Identification 78904760
Sex F
Date of birth BA130949
Colour F
DNA No 28-Sep-13
Grade Black
 Purebred
 351806



Haar stoetvaar Woodview Quest 001 is 'n ingevoerde embrio. Hy is geteel vir melk en groei. Hy het homself al bewys as 'n stoetvaar in die Woodview kudde. Hy het 75 geregistreerde kalwers. Sy moeder kombineer genetica vanaf die Westholme bulle ETJ003 & ETJ 001. Sy is ge-KI met Kitateruyasudo J2810 (ETJ003) en het saam met die bulle HJ13-19 & BA09-330 geloop. Sy is swaar dragtig.

- └ IMJFAJ2351 HIRASHIGETAYASU J2351 HONGEN
- └ **Sire:** BA090330 WOODVIEW QUEST 001
- └ KJDFY0011 LAKE WAGYU FY011 (AI) (ET)
- Animal:** BA130949 WOODVIEW BA 130949
- └ BA060103 WOODVIEW LEADER 6 10
- └ **Dam:** BA090302 WOODVIEW TAYASU 09 302
- └ BA070122 WOODVIEW TAYASU 1ST 7 122

PURCHASER
 PRICE



LOT 36 AKAUSHI (RED) FULLBLOOD FEMALE

SPECIES: WAGYU FEMALE: 1 TOTAL: 1

Breeder Name Xhariep Wagyu
Wagyu No MILAH WB 17-001
Identification 5000034958
Sex F
Date of birth WB170001
Colour F
DNA No 17-Mar-17
Grade Red
Blood C17-10330
 Fullblood
 1



This female embryo will enhance your herd with the traits that you need to become a successful Wagyu breeder. You need a bigger carcass and growth to get your animals ready for the market in quicker time.. This is what KALANGA RED STAR C402 will bring.. this sire brings carcass and growth indexes above the breed for all growth traits. Combine this with females on mother side (KALANGA TAMAKIKO, KALANGA HIKAKIKO) and you get rib fat, rump fat, marbling and growth at 600 days 56kg above the breed. On top of that you get a carcass index of 160\$ - 30\$ above the breed average. Its all about the money .

PURCHASER
 PRICE

- └ AL502 HB BIG AL 502
- └ **Sire:** HBCFV2139 HEART BRAND RED EMPEROR (USA)
- └ J19461 DAI 8 MARUNAMI J19461
- Animal:** WB170001 MILAH WB 17-001
- └ HBCFV2141 HEART BRAND RED STAR
- └ **Dam:** KALFC0708 KALANGA F C708 (AI) (ET)
- └ KALFU0036 KALANGA HIKAHOMARE VW36



LOT 38 BLACK PUREBRED FEMALE

SPECIES: WAGYU FEMALE: 1 TOTAL: 1

Breeder Name Woodview
Wagyu No WOODVIEW BA140043
Identification 5000000058
Sex F
Date of birth BA140043
Colour F
DNA No 17-Aug-14
Grade Black
 Purebred
 62765



n Goed uitgegroeide jong koei. Haar stoetvaar is 'n kloon van die beroemde Japanese bul Itozurudo J2810. Hy teel groot Wagyu's met uitstekende melk en marmering. Hy teel ook van die fynste marmering in die Wagyu ras. Sy is ge-KI met Hirashigetajasu J2351 (ETJ001). En sy het met die bulle HJ13-04, HJ13-05 & BA09-337 geloop. Sy is swaar dragtig.

- └ 100FB598 ITOKITATSURU
- └ **Sire:** TF771 ITOZURU DOI ETN02 TF 771
- └ 100FB662 YASUHIME
- Animal:** BA140043 WOODVIEW BA140043
- └ BA070143 WOODVIEW WISEMAN 7 143
- └ **Dam:** BA100412 WOODVIEW START 10 412
- └ BA070185 WOODVIEW EXTRA SPACIAL 7 185

PURCHASER
 PRICE



LOT 39 AKAUSHI (RED) FULLBLOOD MALE

SPECIES: WAGYU MALE: 1 TOTAL: 1

Breeder Name Xhariep Wagyu
Name MILAH WB 17-006
Wagyu No 5000035005
Identification WB170006
Sex M
Date of birth 16-Mar-17
Colour Red
DNA No C17-10335
Grade Fullblood
Blood 1

This male is a must for any fullblood herd. With a mother showing high indexes for growth, carcass, marbling and eye muscle coupled with the best of the best Kalanga Red Star C402 as a sire, what more do you want to really add value to your herd. This potential herd sire also will bring profit and marbling to your herd with a grandmother on mothers side (Kalanga Hikakiko) with marbling, eye muscle and carcass indexes far above the breed average.. with an impressive 160\$ carcass index this bull is a must.

PURCHASER
 PRICE



GENETICS

└ HBCFV2141 HEART BRAND RED STAR

└ **Sire:** KALFC0402 KALANGA RED STAR C402

└ KALFU0036 KALANGA HIKAHOMARE VW36

Animal: WB170006 MILAH WB 17-006

└ IMUFN2125 TAMAMARU (USA)

└ **Dam:** KALFB0004 KALANGA TAMAKIKO B004 (AI)

└ KALFV0009 KALANGA HIKAKIKO QW09



LOT 40 BLACK FULLBLOOD MALE

SPECIES: WAGYU MALE: 1 TOTAL: 1

Breeder Name Delta Wagyu South Africa
Name HESSI HJ 140023
Wagyu No 5000008135
Identification HJ140023
Sex M
Date of birth 27-Oct-14
Colour Black
DNA No 284316
Grade Fullblood
Blood 1

This bull is packed with marbling through Lake Wagyu C87 (Michifuku) and Kitateruyasudo (ETJ003)

If you want to start breeding Wagyu out of commercial cows, this is another perfect bull to use as a foundation sire as well as for F1 production.

PURCHASER
 PRICE



GENETICS

└ WKSFM0164 WORLD K'S MICHIFUKU 1615

└ **Sire:** KJDFC0087 LAKE WAGYU C087

└ KJDFY0034 LAKE WAGYU Y034 (AI)

Animal: HJ140023 HESSI HJ 140023

└ WESFA0107 WESTHOLME HIRASHIGETAMANA

└ **Dam:** BA110586 WOODVIEW INSURANCE 11 586

└ KJDFC0058 LAKE WAGYU C058



LOT 41 BLACK FULLBLOOD MALE

SPECIES: WAGYU MALE: 1 TOTAL: 1

Breeder Name Absolute Wagyu
Name BEN TSON KI 140018
Wagyu No 82208158
Identification KI140018
Sex M
Date of birth 10-Oct-14
Colour Black
DNA No 255515
Grade Fullblood
Blood 1

This Bull was the Number 1 in his embryo group for Phenotype and Conformation. On his sire side he is bred for size , growth and marbling by combining Michifuku 1615 and TF 151.

PURCHASER
 PRICE



GENETICS

└ IMUFM1615 WORLD K'S MICHIFUKU 1615

└ **Sire:** KJDFC0087 LAKE WAGYU C087

└ KJDFY0034 LAKE WAGYU Y034 (AI)

Animal: KI140018 BEN TSON KI 140018

└ IMJFAJ2351 HIRASHIGETAYASU J2351 HONGEN

└ **Dam:** KJDFC0143 LAKE WAGYU F C143

└ GRSFY0066 GOORAMBAT Y066 (AI)



LOT 42 BLACK FULLBLOOD MALE

SPECIES: WAGYU MALE: 1 TOTAL: 1

Breeder Name Ken Forrester Prime Beef
Name KFPB KF 160010
Wagyu No 5000022391
Identification KF160010
Sex M
Date of birth 10-Mar-16
Colour Black
DNA No 346764
Grade Fullblood
Blood 1

This young Wagyu bull's typical traits are fast growing, big scrotal size, bigger eye muscle and marbling. This Bull received a gold certificate at the growth test of the ARC. We used this sire extensively in our herd and the offspring looks very promising. He is well balanced and stands out in his age group. Sire: OAK VALLEY 10045 is from the Itomichi 1/2 bloodline which has been used for increased mature size and growth rate without reducing marbling. TOP 10% Mature Weight, TOP 1 % Milk & TOP 10% Carcass Weight. Dam: KFPB MICHIFUKI-01 is bred from WESTHOLME HIRASHIGETAMANA blood line, which is from the famous Hirashigeteyasu ETJ 001 which is one of only two Kedaka blood bred bulls outside of Japan, this makes him one of the best out cross sires in the Wagyu breeding business in Australia. This sire has exceptional good milk and scrotal size, and form LAKE Wagyu C084 with a big eye muscle good marbling and marble fineness (from WORLD K'S MICHIFUKU 1615 and ITOZURUDOI TF151) .

PURCHASER
 PRICE



GENETICS

└ IMUFP0036 TF ITOMICHI{1/2}

└ **Sire:** OVE100045 OAK VALLEY 10045

└ NLKPQ002 RANGEVIEW YURU (ET)

Animal: KF160010 KFPB KF 160010

└ WESFA0107 WESTHOLME HIRASHIGETAMANA

└ **Dam:** KF120004 KFPB MICHIFUKI-01

└ KJDFC0084 LAKE WAGYU C084



LOT 43 6 X BLACK F1 FEMALE

SPECIES: WAGYU FEMALE: 1 TOTAL: 1

Breeder Name AL5 Wagyu
Name AL5XM0172
Sex F
Date of birth 15-Nov-16
Colour Black
DNA No 363518
Grade F1
Blood 0.5

This Fukutsuru infused Wagyu/Angus heifers is the ideal start for anyone who are looking to get an entry into the Wagyu industry.

Die ideale geleentheid om in die Wagyuindustrie betrokke te raak. Die pakkie kom saam met 10 Westholme Hirashigetayasu Z278 strooitjies.

PURCHASER
PRICE



TFWFW0629 TAKEDA FARM FUKUTSURU 004

Sire: AL140054 AL 5 AL 140054

KJDFE0003 LAKE WAGYU E3

Animal: AL5XM0172

┌

Dam: Angus

┌



LOT 44 BLACK PUREBRED FEMALE

SPECIES: WAGYU FEMALE: 1 TOTAL: 1

Breeder Name Woodview
Name WOODVIEW 632 147
Wagyu No 75736157
Identification BA120632
Sex F
Date of birth 17-Aug-12
Colour Black
DNA No 232954
Grade Purebred

Sy is geteel as 'n moederlyn koei en sy het dit bewys. Sy het beide TF147 en ETJ001 in haar nageslag. Sy het reeds 3 goeie kalwers geproduseer.

Sy is ge-KI met Kitateruyasudoj J2810 (ETJ003). En het ook saam met die bulle HJ13-04, HJ13-05 & BA09-337 geloop. Sy is swaar dragtig.

PURCHASER
PRICE



J483 ITOFUJI J483 KURO IKU

Sire: IMUFQTF147 ITOSHIGEFUJI 147

J920752 DIA 30 NOBORU J920752

Animal: BA120632 WOODVIEW 632 147

BA070143 WOODVIEW WISEMAN 7 143

Dam: BA100352 WOODVIEW DANCING QUEEN 10 352

BA060104 WOODVIEW DANCING QUE



LOT 45 BLACK PUREBRED FEMALE

SPECIES: WAGYU FEMALE: 1 TOTAL: 1

Breeder Name Woodview
Name WOODVIEW LAKE Wagyu 11 494
Wagyu No 73468498
Identification BA110494
Sex F
Date of birth 26-Aug-11
Colour Black
DNA No 248950
Grade Purebred

BA11-494 is 'n goed geteelde koei en 'n uitstekende produserder, haar stoetvaar is die alombekende Blackmore bul Hikoshigefuji y 342. Sy behoort ook om met Tajima bulle gedek te word.

Sy het saam met die bulle BA13-867 & BA15-372 geloop. Sy is swaar dragtig.

PURCHASER
PRICE



IMUFQTF147 ITOSHIGEFUJI 147

Sire: Y342 BLACKMORE HIKOSHIGEFUJI Y342

T039 BLACKMORE HIKOHIME T039

Animal: BA110494 WOODVIEW LAKE WAGYU 11 494

BA060103 WOODVIEW LEADER 6 10

Dam: BA090285 WOODVIEW BA 090285

BA070118 WOODVIEW BA 070118



LOT 46 BLACK PUREBRED FEMALE

SPECIES: WAGYU FEMALE: 1 TOTAL: 1

Breeder Name Woodview
Name WOODVIEW BLACK LADY 11 458
Wagyu No 73441735
Identification BA110458
Sex F
Date of birth 05-Aug-11
Colour Black
DNA No 233161
Grade Purebred

BA11-458 is 'n goed geteelde koei en 'n uitstekende produserder. Haar stoetvaar is die alombekende Blackmore bul Hikoshifefuji Y342. Sy verkoop met 'n bul kalf BA17-276.

PURCHASER
PRICE



IMUFQTF147 ITOSHIGEFUJI 147

Sire: Y342 BLACKMORE HIKOSHIGEFUJI Y342

T039 BLACKMORE HIKOHIME T039

Animal: BA110458 WOODVIEW BLACK LADY 11 458

BA060103 WOODVIEW LEADER 6 10

Dam: BA090290 WOODVIEW BLACK LADY 09 290

BA070149 WOODVIEW BLACK LADY 7 149



LOT 47 BLACK F3 FEMALE

SPECIES: WAGYU FEMALE: 1 TOTAL: 1

Breeder Name AL5 Wagyu
Woodview Name Woodview 11 585
Wagyu No 74602103
Identification BA110585
Sex F
Date of birth 21-Nov-11
Colour Black
DNA No 312950
Grade F3
Blood 0.87

This Linebred Kitaterayaso Doi, or 003 as it is known to the industry is one of A15's prolific embryo producers. Ai'd with Hirashige 40-0. This cow will be an excellent addition to any herd, which is geared for expansion.

Die koei word beskikbaar gestel nadat sy bittergoed presteer het met A15 se in-vitro embrioprogram. Sy is 'n lyngeteelde Kiteterayaso Doi, of 003 soos dit in die industrie bekend staan. Sy sal vir enige teler topgehalte "Purbred"-kallers teel en haar embrioproduksie vermoë is besonder.

PURCHASER _____
 PRICE _____



- └─ IMJFAJ2351 HIRASHIGETAYASU J2351 HONGEN (IMP J/)
- └─ **Sire:** BA030043 WOODVIEW 03 43
- └─ BA010039 WOODVIEW MEGAN 4TH
- Animal:** BA110585 Woodview 11 585
- └─ BA000024 WOODVIEW KITATERUYASU
- └─ **Dam:** BA070174 WOODVIEW ELSLIE ROOI GIRLIE 2
- └─ BA050982 WOODVIEW HR05982



LOT 49 BLACK FULLBLOOD MALE

SPECIES: WAGYU MALE: 1 TOTAL: 1

Breeder Name Woodview
Woodview Name WOODVIEW BA 130975
Wagyu No 82439290
Identification BA130975
Sex M
Date of birth 14-Oct-13
Colour Black
DNA No 261768
Grade Fullblood
Blood 1

Ek het hoë agting vir die bul en het hom al vir 2 seisoene in die kudde gebruik. Hy is een van net 'n paar beeste in die land wat van die Takazakura bloedlyn af kom. Sy moeder BA04-044 is 'n baie goeie embrio koei en sy het al 18 nageslag in ons kudde.



- └─ IMUFQTF147 ITOSHIGEFUJI 147
- └─ **Sire:** BA090319 WOODVIEW REQUISITE TF147
- └─ KJDFB0077 LAKE WAGYU B77(ET) (AI)
- Animal:** BA130975 WOODVIEW BA 130975
- └─ FB2892 WORLD KS TAKAZAKURA
- └─ **Dam:** BA040044 WOODVIEW 04 44
- └─ BA980001 WOODVIEW TIENKIE

PURCHASER _____
 PRICE _____



LOT 48 BLACK FULLBLOOD MALE

SPECIES: WAGYU MALE: 1 TOTAL: 1

Breeder Name Woodview
Woodview Name HESSI HJ 140003
Wagyu No 81319899
Identification HJ40003
Sex M
Date of birth 17-Jul-14
Colour Black
DNA No 245587
Grade Fullblood
Blood 1

Ek het hierdie bul terug gekoop van Hennie Raal van Mosselbaai, omdat hy geteel is uit Itomoritaka en die embrio skenker Woodview Megan 4th. Itomoritaka is bekend vir die fantastiese vroulike diere wat hy produseer. Sy ma is 'n Kitateruyasudoï J2810 dogter wat nooit misluk nie. Sy het al 44 nageslag sover. Sy sal maklik 60 nageslag kan he, aangesien sy nogsteeds embrios produseer. Hierdie kombinasie saam met Megan 4th is perfek. 'n Dogter van Itomoritaka is vir R470 000.00 verkoop op die Woodview veiling aan Lourens en Irma Du Plessis van Thabazimbi.

PURCHASER _____
 PRICE _____



- └─ J1555 TOHIRASHIGE J1555
- └─ **Sire:** ETJ002 ITOMORITAKA J2703 HONGEN (JAP)
- └─ J565554 DAI 6 OEFUJII J565554 KURO KOH
- Animal:** HJ40003 HESSI HJ 140003
- └─ IMJFAJ2810 KITATERUYASUDOÏ J2810 HONGEN
- └─ **Dam:** BA010039 WOODVIEW MEGAN 4TH
- └─ BA980020 WOODVIEW MEGAN



LOT 50 BLACK FULLBLOOD MALE

SPECIES: WAGYU MALE: 1 TOTAL: 1

Breeder Name Woodview
Woodview Name HESSI HJ 140011
Wagyu No 81856122
Identification HJ140011
Sex M
Date of birth 29-Jul-14
Colour Black
DNA No 245595
Grade Fullblood
Blood 1

Ek het hierdie bul terug gekoop van Hennie Raal in Mosselbaai, omdat hy geteel is uit my Quest 001 bul en sy Ma is die embrio skenker Woodview Megan 4th. Sy is 'n Kitateruyasudoï J2810 dogter wat nooit teleerstel nie. She het al 44 nageslag sover in die stoet. Sy sal maklik 60 kalwers as nageslag kan he aangesien sy nogsteeds embrios produseer.



- └─ IMJFAJ2351 HIRASHIGETAYASU J2351 HONGEN
- └─ **Sire:** BA090330 WOODVIEW QUEST 001
- └─ KJDFY0011 LAKE WAGYU FY011 (AI) (ET)
- Animal:** HJ140011 HESSI HJ 140011
- └─ IMJFAJ2810 KITATERUYASUDOÏ J2810 HONGEN
- └─ **Dam:** BA010039 WOODVIEW MEGAN 4TH
- └─ BA980020 WOODVIEW MEGAN

PURCHASER _____
 PRICE _____

NAME AND SURNAME	BREEDER FARM NAME	CELL PHONE	EMAIL ADDRESS	GROUP/GUEST
Samuel Pauw	AL5 Wagyu	084 700 9700	samuel.pauw@terraworks.co.za	Certified Wagyu Breeder
Johan & Louw de Bruin	Xariep Wagyu	083 262 1230	louw@ruwacon.co.za	Certified Wagyu Breeder
Jacques le Roux	Kobe Stud breeding	082 320 2808	jacques@freroux.com	Certified Wagyu Breeder
Andrew Scott	Winterberg farming	072 279 7942	as@winterbergfarming.com	Certified Wagyu Breeder
Johan Du Plessis	Delta Wagyu South Africa	082 788 5378	joeduplessis@gmail.com	Certified Wagyu Breeder
Brian Angus	Woodview	082 573 9687	woodview@mweb.co.za	Certified Wagyu Breeder
Niekie du Toit	Betmar Wagyu	083 651 5896	niekiedt@gmail.com	Guest seller
Fanie Steyn	Absolute Wagyu	082 825 5091	drfaniesteyn@gmail.com	Guest seller
Niel van Zyl	Ken Forrester Prime Beef	082 317 9350	Neil@invitroafrica.com	Guest seller
Aaron Cooper	Myers-Cooper	402 310 1327	coopaaron@gmail.com	Guest seller
Gerhard van der Burgh	Oliveburgh Wagyu	082 427 3738	gvdburgh@gmail.com	Guest seller
			christovdb@gmail.com	



OLIVEBURGH

WAGYU

CHRISTO VAN DER BURGH: 072 207 2977
GERHARD VAN DER BURGH: 082 427 3738

CERTIFIED wagyu BREEDERS AUCTION

TIMED AUCTION CATALOGUE 2017



WILDSWINKEL
 maklik eerlik direk

19 - 21 October 2017
NO RESERVE AUCTION



CERTIFIEDWAGYU.CO.ZA



WILDWINKEL TIMED AUCTIONS HOW TO

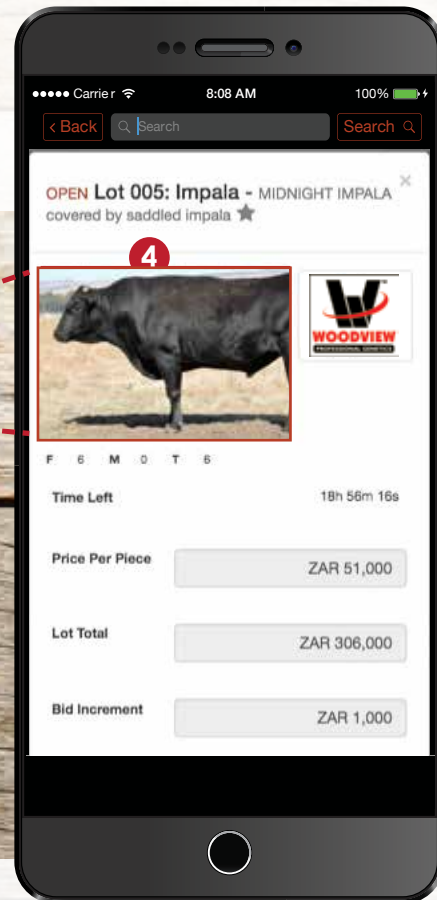
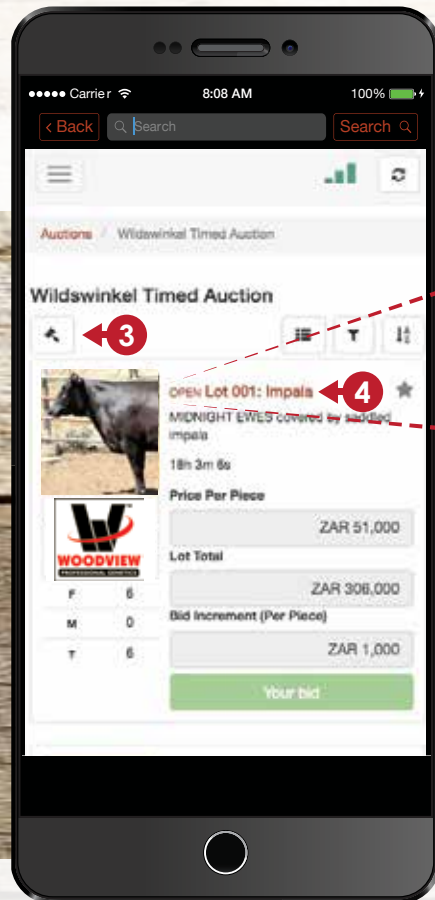
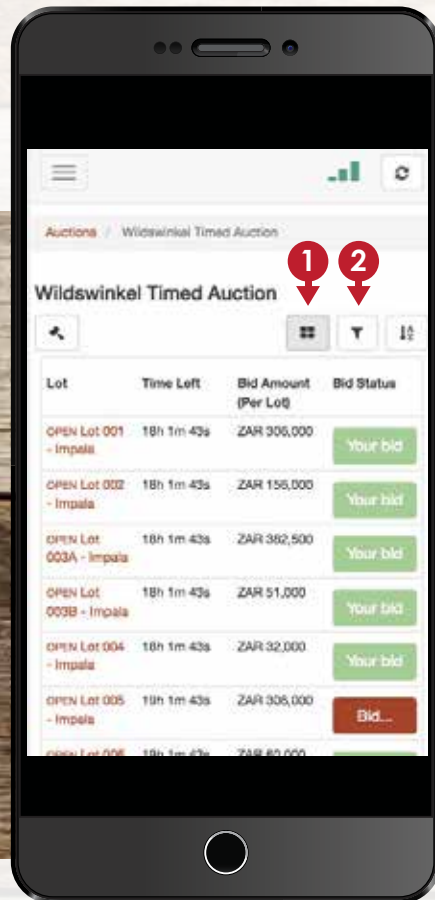
Download the Wildswinkel cellphone app to register and bid



NAVIGATION MADE EASY

View the auction in grid or list view and easily toggle between the two. Flag the

lots you're interested in to add them to your watchlist and filter lots by highest bidding value, specie, your bids, etc.



- 1 View the auction in 'list view' or toggle to grid view
- 2 Filter lots by specie, highest bid value etc. or sort lots by time remaining

- 3 Toggle to your bid overview showing all your active bids and those you've selected to watch

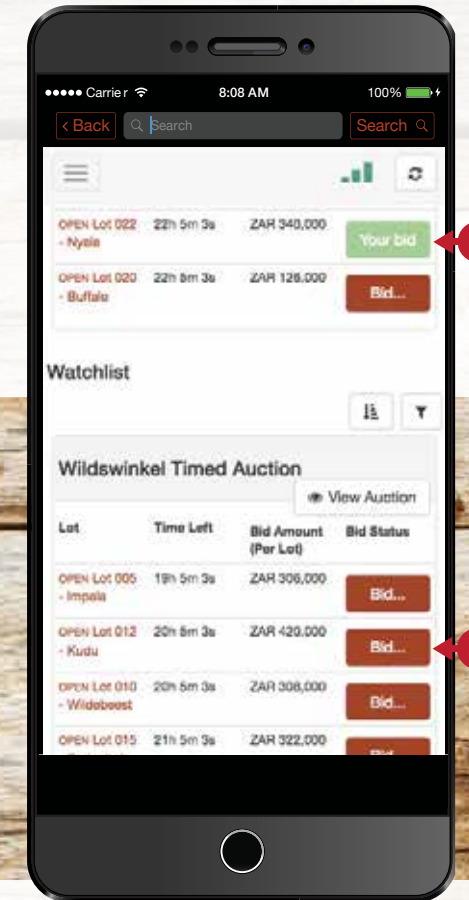
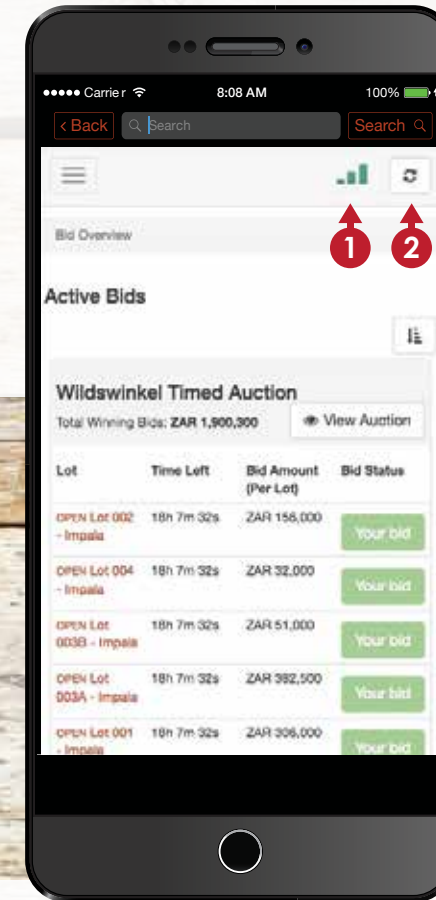
- 4 Click on the lot name to open up the lot details and zoom in on the pictures

Bidding at your fingertips

BIDDING MADE EASY

View the auction in grid or list view and easily toggle between the two. Flag the

lots you're interested in to add them to your watchlist and filter lots by highest bidding value, specie, your bids, etc.



- 1 Check this connectivity indicator and ensure that it is green at all times!
- 2 Click the refresh button at any time to get the latest data

- 3 You can see at any time whether the bid is still with you
- 4 You can bid from the watchlist view, detailed lot view, list view or any view you prefer!

wildswinkel.co.za



WILDWINKEL
maklik eerlik direk

TIMED AUCTION LOTS



DELTA WAGYU SOUTH AFRICA

LOT 001
WAGYU EMBRYO
TOTAL 6

SMOFF0126 X MC3F E0003

COLOUR: Black DNA NO: GRADE: Fullblood

www.wagyu.org.au



DELTA WAGYU SOUTH AFRICA

LOT 002
WAGYU EMBRYO
TOTAL 6

SMOFF0126 X CCCF D0390

COLOUR: Black DNA NO: GRADE: Fullblood

www.wagyu.org.au



DELTA WAGYU SOUTH AFRICA

LOT 007
WAGYU EMBRYO
TOTAL 6

IMUF QT148 X CCCF D0390

COLOUR: Black DNA NO: GRADE: Fullblood

www.wagyu.org.au



KOBE STUD BREEDING

LOT 008
WAGYU EMBRYO
TOTAL 10

KR140016 X KR140002

COLOUR: Black DNA NO: GRADE: Fullblood

www.wagyu-sa.co.za



DELTA WAGYU SOUTH AFRICA

LOT 003
WAGYU EMBRYO
TOTAL 6

IMUF QT148 X AACF C0047

COLOUR: Black DNA NO: GRADE: Fullblood

www.wagyu.org.au



DELTA WAGYU SOUTH AFRICA

LOT 004
WAGYU EMBRYO
TOTAL 6

IMUF QT148 X AACF D0075

COLOUR: Black DNA NO: GRADE: Fullblood

www.wagyu.org.au



KOBE STUD BREEDING

LOT 009
WAGYU EMBRYO
TOTAL 10

KR140016 X KR140003

COLOUR: Black DNA NO: GRADE: Fullblood

www.wagyu-sa.co.za



KOBE STUD BREEDING

LOT 010
WAGYU EMBRYO
TOTAL 10

KR140016 X KR140007

COLOUR: Black DNA NO: GRADE: Fullblood

www.Wwagyu-sa.co.za



DELTA WAGYU SOUTH AFRICA

LOT 005
WAGYU EMBRYO
TOTAL 6

IMUF QT148 X AACF D0075

COLOUR: Black DNA NO: GRADE: Fullblood

www.wagyu.org.au



DELTA WAGYU SOUTH AFRICA

LOT 006
WAGYU EMBRYO
TOTAL 6

IMUF QT148 X CCCF D0390

COLOUR: Black DNA NO: GRADE: Fullblood

www.wagyu.org.au



KOBE STUD BREEDING

LOT 011
WAGYU EMBRYO
TOTAL 10

KR140016 X KR140008

COLOUR: Black DNA NO: GRADE: Fullblood

www.wagyu-sa.co.za



KOBE STUD BREEDING

LOT 012
WAGYU EMBRYO
TOTAL 10

KR140016 X KR140017

COLOUR: Black DNA NO: GRADE: Fullblood

www.wagyu-sa.co.za

TIMED AUCTION LOTS



AARON COOPER

LOT 013
WAGYU EMBRYO
TOTAL 6

AF40791 X AF45008

COLOUR: Red DNA NO: GRADE: Fullblood

www.wagyu.org



AARON COOPER

LOT 014
WAGYU EMBRYO
TOTAL 6

AF61154 X AF44954

COLOUR: Red DNA NO: GRADE: Fullblood

www.wagyu.org



WOODVIEW

LOT 019
WAGYU SEMEN
TOTAL 6

KITATERUYASUDO J2810 HONGEN

COLOUR: Black DNA NO: 227622 GRADE: Fullblood

www.wagyu.org.au



WOODVIEW

LOT 020
WAGYU SEMEN
TOTAL 6

ITOZURU DOI ETN02 TF 771

COLOUR: Black DNA NO: 169441 GRADE: Fullblood

www.wagyu.org.au



AARON COOPER

LOT 015
WAGYU EMBRYO
TOTAL 6

AF5617 X AF9202

COLOUR: Red DNA NO: GRADE: Fullblood

www.wagyu.org



AARON COOPER

LOT 016
WAGYU EMBRYO
TOTAL 6

EAF97355 X AF9102

COLOUR: Red DNA NO: GRADE: Fullblood

www.wagyu.org



WOODVIEW

LOT 021
WAGYU SEMEN
TOTAL 6

WESTHOLME HIRAMICHI TSURU

COLOUR: Black DNA NO: 203164 GRADE: Fullblood

www.wagyu.org.au



WOODVIEW

LOT 022
WAGYU SEMEN
TOTAL 6

HIRASHIGETAYASU J2351 HONGEN

COLOUR: Black DNA NO: 227623 GRADE: Fullblood

www.wagyu.org.au



AARON COOPER

LOT 017
WAGYU EMBRYO
TOTAL 6

AF40792 X AF9142

COLOUR: Red DNA NO: GRADE: Fullblood

www.wagyu.org



AARON COOPER

LOT 018
WAGYU EMBRYO
TOTAL 6

AF40792 X AF13874

COLOUR: Red DNA NO: GRADE: Fullblood

www.wagyu.org



WOODVIEW

LOT 023
WAGYU SEMEN
TOTAL 6

ACADEMY RED WAGYUS TAMBO H18

COLOUR: Red DNA NO: 294696 GRADE: Fullblood

www.wagyu.org.au



WOODVIEW

LOT 024
WAGYU SEMEN
TOTAL 6

ACADEMY RED WAGYUS RECITAL J34

COLOUR: Red DNA NO: 344365 GRADE: Fullblood

www.wagyu-sa.co.za

RULES OF AUCTION

in respect of sales by Wildswinkel Veilings (Pty) Ltd – Registration Number: 2015/316030/07
21 October 2017, 19:00, Atterbury Theatre, Lynnwood Bridge, Pretoria, Gauteng
(As auction house, herein after referred to as the “Auctioneer” and the person conducting the auction referred to as the “auctioneer”)

- All goods sold by auction will be subject to a reserve price, unless specifically stated otherwise by the auctioneer at the start of the auction.
- Unless where notice is given, it is not allowed that the Owner / Seller, his agent or the Auctioneer may bid on any of the Owner's / Seller's goods sold by auction. However, individual Sellers may bid on other Sellers' animals.
- These Rules of Auction comply with Section 45 of the Consumer Protection Act, Act 68 of 2008 (“the Act”) and the Regulations of the Act as applicable, which read as follows:
Section 45: “Auctions”
 - In this section, “auction” includes a sale in execution of or pursuant to a court order, to the extent that the order contemplates that the sale is to be conducted by an auction.
 - When goods are put up for sale by auction in lots, each lot is, unless there is evidence to the contrary, regarded to be the subject of a separate transaction.
 - A sale by auction is complete when the auctioneer announces its completion by the fall of the hammer, or in any other customary manner, and until that announcement is made, a bid may be retracted.
 - Notice must be given in advance that a sale by auction is subject to—
 - a reserved or upset price; or
 - a right to bid by or on behalf of the owner or auctioneer, in which case the owner or auctioneer, or any one person on behalf of the owner or auctioneer, as the case may be, may bid at the auction.
 - Unless notice is given in advance that a sale by auction is subject to a right to bid by or on behalf of the owner or auctioneer—
 - the owner or auctioneer must not bid or employ any person to bid at the sale;
 - the auctioneer must not knowingly accept any bid from a person contemplated in paragraph (a); and
 - the consumer may approach a court to declare the transaction fraudulent, if this subsection has been violated.
 - The Minister may prescribe requirements to be complied with by an auctioneer, or different categories of auctioneer, in respect of—
 - the conduct of an auction;
 - the records to be maintained with respect to property placed for auction; and
 - the sale of any such property by auction.
- The auction is conducted for the normal and voluntary disposal of the Owner's / Seller's goods.
- The auction will start at the published time. The auction will not be delayed to allow any specific person or more persons to take part in the auction.
- All goods sold at the auction are sold by the Auctioneer as agent on behalf of the Owner / Seller. The Owner / Seller hereby authorises the Auctioneer to issue invoices, credit and debit notes as applicable on its behalf and agrees not to issue the aforementioned for the same supply. The Owner/Seller also hereby authorises the Auctioneer to collect the purchase price from the Buyer and the Owner / Seller do hereby cede to the Auctioneer all the Owner / Seller's rights, title and interest in and to its claim for payment of the purchase price against

- the purchaser, which session the Auctioneer do hereby accept.
- The purchase price of the goods sold by auction specifically excludes VAT and VAT must be added to the purchase price and paid by the Buyer unless specifically indicated otherwise. Declaration and compliance related to all applicable taxes is the responsibility of the Owner/Seller and Buyer as relevant.
 - All risk in the goods sold per catalogue shall pass to the Buyer upon the fall of the hammer and upon acceptance of the bid by the Owner/ Seller. Notwithstanding the passing of risk, ownership shall remain vested in the Owner/ Seller until such time as the full purchase price has been paid to the Owner/Seller.
 - Delivery of the goods sold at the auction, shall only be given to the Buyer upon the Buyer fully performing its payment obligations in accordance with these conditions of sale. The Owner / Seller shall be responsible for costs incurred to deliver the goods on the Buyer's transport. The Buyer shall be responsible for procuring and paying for transport of the goods from the Owner / Seller's property.
 - The parties specifically agree that no bid may be retracted after the bid has been knocked down (fall of the hammer) and accepted by the Owner / Seller, unless the Owner / Seller consents thereto in writing.
 - Subject to any reserve price placed on any of the goods by the Owner / Seller, and the provisions of clause 12 and 13 below, the Buyer at any sale by auction shall be the highest bidder indicated by the auctioneer by the fall of the hammer or by such other means as the auctioneer may select.
 - The auction shall take place under the direct and exclusive control of the auctioneer. The auctioneer reserves the right, in its sole discretion, to refuse the bid of any person, to regulate the bidding and to indicate the highest bidder. If the auctioneer suspects that a bidder has not made a bona fide bid, or is unable to pay the purchase price or has not made satisfactory arrangements for payment of the purchase price, he may refuse to accept the bid of such bidder or accept it provisionally until the bidder has satisfied him that he is in a position to pay the purchase price or that he has made satisfactory arrangements for payment thereof. On refusal of a bid under such circumstances the goods may immediately be re-auctioned.
 - In the event of a dispute arising amongst the bidders and / or the Auctioneer, the goods in dispute shall, at the sole discretion of the Auctioneer, be re-auctioned.
 - Any error by the auctioneer shall be entitled to be corrected by him or her immediately upon discovery.
 - Should any contractor remove any goods from the sale venue on instruction of the Auctioneer, acting on behalf of the Buyer, the contractor will be deemed to be the contractor of the Buyer who accepts all costs and risks connected with such removal.
 - he Owner / Seller warrants that there are no encumbrances on such goods, that the said goods are the property of the Owner / Seller, and that the Owner / Seller is competent and legally entitled to dispose of the goods.
 - The Owner / Seller, who offers the goods for sale, accepts all liability regarding the information furnished as to pedigrees, ages, dates of service, state of health or gestation or any other particulars which might be incorrect. In the event of any dispute the Buyer shall only have a claim against the Owner / Seller and not against the Auctioneer. The Owner / Seller and Buyer indemnify the Auctioneer against any claim(s) regarding the information furnished as to pedigrees, ages, dates of service, state of health or gestation or any other particulars which might be incorrect.
 - Should any animal be sold as pregnant, pregnancy will be confirmed before loading, which costs are for the Owner's/ Seller's account. A veterinarian's report confirming pregnancy will be regarded as final. Furthermore, where an animal is sold as pregnant, pregnancy upon loading is guaranteed, but no calf is guaranteed. Once safely loaded onto the Buyer's transport, the risk of the animal's pregnancy transfers to the

- Buyer.
- Where goods are put up for auction the following conditions apply to such goods:
 - All animals put up for auction must, where applicable, be visibly marked with ear tags and/or microchips.
 - Where available, DNA information of the animals must be provided to the Auctioneer in order for the Auctioneer to include such information in the Auction Catalogue.
 - The Owner / Seller warrants that the goods sold are free of any known patent and latent defects and that any right or claim ceded to the Auctioneer in terms of these Rules of Auction is free of any defect or right of deduction or set-off, and that the said right or claim is fully and immediately enforceable against the Buyer.
 - The Buyer shall, prior to the sale, ascertain whether there are any defects in the goods and any bid by a Buyer shall be considered as acceptance of the goods with any patent or latent defects in their condition at the time of sale.
 - The Buyer shall not be entitled to withhold payment of the purchase price to the Auctioneer as a result of any possible or pending claim that he may have against the Owner / Seller on the grounds of misrepresentation or for any other reason whatsoever.
 - The purchase price is payable by the Buyer to the Auctioneer via electronic transfer (“EFT”) on the date of sale (“the payment date”) unless other payment terms and or means are agreed between the Auctioneer and the Buyer. The Auctioneer reserves the right to refuse any other method or means as payment. Payment by way of EFT will only be regarded as done as soon as the funds transferred reflects and are available in the Auctioneer's bank account.
 - In the event that the Auctioneer agrees to facilitate the purchase of the goods by paying an amount equal to the purchase price to the Owner / Seller before the Buyer makes payment to the Auctioneer (“the Payment Terms Agreement”), then the following shall apply:
 - The election to make any payment to the Owner / Seller shall be in the sole and absolute discretion of the Auctioneer, which discretion may be exercised separately with regards to each transaction entered into by the Buyer.
 - Upon payment of the amount referred to in 25.1 above the Owner / Seller's right, title and interest in and to any claims and other rights against the Buyer in terms of or connected with the sale of the goods shall forthwith be ceded and transferred to the Auctioneer, which session the Auctioneer hereby accepts.
 - In the event of any Payment Terms Agreement between the Auctioneer and the Buyer, the following shall apply:
 - No Payment Terms Agreement shall be valid unless reduced to writing and duly signed on behalf of the Auctioneer. The facilitation of any sale by the Auctioneer as referred to in this paragraph 25 shall be strictly subject to the terms and conditions of the Payment Terms Agreement.
 - In the event of any conflict between the contents of this document and the Payment Terms Agreement, the provisions of the Payment Terms Agreement shall prevail.
 - No application for credit as defined in section 8 of the National Credit Act, Act 34 of 2005, will be received or considered by the Auctioneer.
 - Anyone that intends to bid at the auction (Buyer) must register his or her identity on the bidder's record prior to the commencement of the auction and such registration must meet the requirements of the FICA (Financial Intelligence Centre Act, 2001) in respect of the establishment and verification of identity of the person. The prospective Buyer must sign the registration entry and furnish the Auctioneer with a copy of his/her identity document and proof of residence (not older than 3 months).
 - Any person who purchases on behalf of a Principal (i.e. natural person) must furnish the Auctioneer with a written signed Power of Attorney, prior to the commencement of the auction, failing which he/she will be personally

- liable for payment of any purchases made by him/her. The person bidding on behalf of or signing any document on behalf of the purchaser pursuant to a successful bid hereby binds himself/herself personally as co-principal debtor with the Buyer for payment of the purchase price and personally guarantees all the obligations of the Buyer under these Rules of Auction. This paragraph 27 specifically excludes where a Wildswinkel employee enters bids on behalf of a Buyer, who gives instructions telephonically or otherwise, and hereby indemnifies such employee and the Auctioneer who signs any document on behalf of the Buyer and duly authorises the Wildswinkel employee to sign the vendu roll or any other document with regards to the purchase of a specific lot.
- A person who attends the auction, to bid and to sign the bidder's record, on behalf of another person (i.e. on behalf of a company or legal entity) must produce a signed letter of authority that expressly authorises him or her to bid or sign the bidder's record on behalf of that person. Where a person is bidding on behalf of another entity the letter of authority must appear on the letterhead of the entity and must be accompanied by a certified copy of the resolution, if required, authorising him or her to bid on behalf of the entity. The person bidding on behalf of or signing any document on behalf of the Buyer pursuant to a successful bid hereby binds himself personally as co-principal debtor with the Buyer for payment of the purchase price and personally guarantees all the obligations of the Buyer under these Rules of Auction.
 - In the event where a Buyer allows another person to purchase on his or her Buyer's number, the registered Buyer shall be liable for payment of such purchases. No bid by an unregistered Buyer will be accepted by the Auctioneer and the Buyer will have no claim to any of the goods allegedly purchased by him.
 - Until all amounts owing by the Buyer have been paid in full, the Buyer hereby:
 - irrevocably undertake to identify the purchased goods in such a manner that he can at any time identify and indicate the goods deemed to be the property of, and pledged to, the Auctioneer.
 - grants the Auctioneer at all reasonable times access to the premises where the goods are stored or kept for the purposes of perfecting its pledge and exercising any other rights in terms of these Rules of Auction.
 - The Owner / Seller, Buyer and Auctioneer herewith confirm that any action instituted by the Auctioneer against the Owner / Seller and / or Buyer may be instituted in any competent Court. This agreement will be governed in accordance with the laws of the Republic of South Africa.
 - A certificate issued by a Manager of the Auctioneer, whose appointment and authority shall not be necessary to prove, shall be prima facie proof of the amount owing by the Buyer to the Owner / Seller or the Auctioneer.
 - Any indulgence granted by the Auctioneer to the Buyer or the Owner / Seller will not prejudice the rights of the Auctioneer in terms of these Rules of Auction and such indulgence will not constitute an amendment or waiver or novation of these Rules of Auction.
 - The entries made in the Auctioneer's auction roll shall be prima facie evidence of the transaction and shall be binding on the Owner / Seller and the Buyer.
 - he bidder's record and the vendor or vendu roll will be made available for inspection within reasonable time after the auction at the office of the Auctioneer during normal business hours free of charge.
 - All money will be paid into a trust account for the benefit of the Owner / Seller, minus the agreed commission and additional costs agreed upon by and between the Auctioneer and Owner / Seller.
 - Any goods entered or offered for sale are subject to payment by the Owner / Seller / Buyer of the agreed commission, or in absence of an agreement the usual commission by the Owner / Seller / Buyer to the Auctioneer at the rate customarily charged by the Auctioneer

- from time to time, whether the goods are sold at the auction or thereafter, or within 30 days thereafter by private treaty. Unless otherwise agreed in writing, commission shall become due and payable by the Owner / Seller/ Buyer upon the fall of the hammer or upon the entering into of any private treaty involving the Owner / Seller's said goods, whichever date is the earlier, and notwithstanding any breach on the part of the Owner / Seller/ Buyer.
- Every bid shall constitute an offer to purchase the property or goods for the amount bid, which the Owner / Seller or the Auctioneer may accept or reject in their absolute discretion. The Owner / Seller and Auctioneer are entitled, in their absolute discretion to withdraw the property or goods from the sale prior to acceptance by the Owner / Seller.
 - If no bid equals or exceeds the reserve price, if any, the property or goods may be withdrawn from the auction.
 - The Auctioneer accepts no liability for any withdrawal of goods from sale.
 - The Buyer will be responsible to obtain all permits, certificates and transport documents pertaining to the cattle purchased at the auction. The Buyer will be liable for the payment of the purchase price even if he is unsuccessful in obtaining the required permits, certificates or transport documents. As such it is specifically stated that no sale on the auction is subject to the Buyer's successful application for any permit, certificate or transport document.
 - No bid may be withdrawn after the fall of the hammer until the expiry of the confirmation period (if any) that is provided for in the Conditions of Sale, during which time the offer shall be open for acceptance by the Owner / Seller or his agent and if the offer is accepted the sale shall be deemed to be a sale by auction for purposes of the Act.
 - In the event of the sale requiring the consent of any statutory authority or any court of law, then this auction will be subject to the granting of such consent.
 - The Buyer and the Owner / Seller do hereby consent to the payment of attorney and own client costs in the event of any legal action being instituted against them by the Auctioneer or Owner / Seller.
 - Any agreement contrary to these Rules of Auction shall not be binding unless it is confirmed in writing and signed by a manager of the Auctioneer.
 - If any clause or term of these Rules of Auction should be invalid, unenforceable and illegal, then the remaining terms and provisions of these Rules of Auction shall be deemed to be severable therefrom and shall continue in full force and effect unless such invalidity, unenforceable or illegality goes to the root of these Rules of Auction.
 - Default by Buyer: Should the Buyer/Purchaser refuse or otherwise fail to pay the purchase price within 7 days of the due date, the Auctioneer shall be entitled to:
 - claim interest from the Buyer/Purchaser the prescribed mora interest rate calculated from the date of purchase to date of payment, and/or
 - repossess the goods to resell same at the risk of the defaulting Buyer/Purchaser who shall be liable for all costs in connection with the resale and any loss or damage incurred, and will not be entitled to any profit that may arise from the resale, and/or
 - institute legal proceedings for the payment of any amount owing or for the return of the goods in which event the provisions of clause 47 will apply; and/or
 - Claim specific performance and/or claim damages should the Buyer not make payment as and when it comes due; and/or
 - recover the Auctioneer's legal costs calculated at the Attorney and own Client tariff as well as collection, tracing, storage and transport costs, and/or
 - retain in pledge any goods or other property in the possession of the Auctioneer belonging to either the Buyer / Purchaser or the Owner / Seller as security for the due fulfilment of any obligation owed to the relevant party or

- the Auctioneer.
- Any dispute between the parties will be governed by the South African legal system and legislation.
 - The Auctioneer reserves the right to amend these Rules of Auction. By entering a bid any prospective Buyer binds himself or herself to these Rules of Auction, as well as any special conditions of sale set forth in the auction catalogue.

SPECIAL RULES OF AUCTION

- Wildswinkel's standard Rules of Auction will apply to all lots, unless in contradiction with any of the terms set out in the ‘Special Rules: of Auction, in which case the provisions of the Special Rules of Auction will apply.
- The Owner/Seller retains a 10% semen share in the bulls sold at the Auctions. It is therefore recommended that the Owner/Seller reach an agreement setting out the terms and conditions, as well as any practical arrangements. The Owner/Seller's share in the semen is not subject to the aforesaid agreement.
- The Buyer will be liable for any feed and pen costs in the amount of R150.00 per animal per day after 7 days has passed since the Auction. The aforesaid amount will be payable on demand to an account indicated by the Owner/Seller.
- PAYMENT TERMS: All lots purchased at the auction becomes due and payable on the day of the auction. Notwithstanding the aforementioned, should a Buyer fail to make payment in respect of lots purchased within 72 hours from the day of the auction, the Buyer is in breach and the Owner/Seller reserves the right to cancel the transaction. In such event the Buyer will be liable to the Auctioneer for its commission, payable on demand, as damages the Auctioneer suffered as a result of the breach of contract by the Buyer.**
- TIMED AUCTION:**
 - Goods sold on the Timed Auction will not be subject to a reserve price, however, such goods will have a minimum starting price.
 - In respect of lots auctioned on the timed auction, the following additional terms and conditions will apply:
 - Subject to paragraph 5.2(b) below, lots on the timed auction will close as per the specified date and time per lot as advertised on the online bidding platform. The closing of lots may be staggered.
 - A lot will not close if a bid is received on the lot within a period of 2 minutes before the closing time as published. In this event, the closing time on the lot will automatically be extended for a further period of 2 minutes. The lot will only close if a final bid on the lot stands alone for a period of 2 minutes.
 - The “fall of the hammer” on a lot for the purposes of the timed auction is defined as the date and closing time published on the online bidding platform and/or the Seller's Auctioneer's public websites, alternatively at the date and time a final bid on a lot stands alone for a period of 2 minutes, whichever occurs last.
 - All lots on sale on the timed auction will have a minimum starting bid price which will be indicated on the online bidding platform. Any bid at or above the minimum starting bid price will be successful.
 - The minimum bidding increment may vary per lot but is specified on the online bidding platform.
 - Once a bid is made it cannot be withdrawn.
 - Neither the Auctioneer, the Sellers' or the Auctioneer's representatives will be liable for any failure in connectivity or software while using the online bidding platform.
 - Neither the Auctioneer, the Sellers or the Auctioneer or Sellers' representatives will be liable for software failure of any nature.
- EMBRYOS PRESENTED ON THE TIMED AUCTION:**
 - All embryos presented on auction are approved by the Wagyu Breeders Society of South Africa, should the embryo need to be imported.
 - All embryos presented on auction complies with the relevant protocols for imports to South Africa;
 - All embryos presented on auction are imported by the Certified Wagyu Breeders Group, at its costs;
 - The Owner/Seller undertakes to take all reasonable steps to ensure that, after the permits have been issued, the embryos be made available within 3 months at the relevant institution in South Africa;
 - All information published in respect of embryos are verified by the Australian Wagyu Association, or the American Wagyu Association, whichever applies; and
 - Should a dispute arise pertaining to the information and/or import of an embryo, the Owner/Seller may cancel the transaction.

CERTIFIED
wagyu
BREEDERS AUCTION



CERTIFIED **WAGYU** BREEDERS AUCTION
22 SEPTEMBER 2018



WILDSWINKEL
maklik eerlik direk



CERTIFIEDWAGYU.CO.ZA